

LEGEND

Approximate Project Area - 22.76 ac.±

Western Extent
 Lat: 30° 12' 13.29" N (30.203692 dd)
 Long: 81° 47' 51.23" W (-81.797564 dd)

Eastern Extent
 Lat: 30° 12' 14.47" N (30.204019 dd)
 Long: 81° 45' 59.42" W (-81.766506 dd)



Project No.: 16047	
Exhibit No.: 1	
Date: 12-8-16	
Rev. Date:	

**Collins Rd. Shindler Dr to Rampart Rd
 USGS Topographic Quadrangle Map**

By: DF
 Duval County, Florida



8711 Perimeter Park Blvd.,
 Suite 1
 Jacksonville, FL 32216
 (904) 285-1397
 mail@ersenvironmental.com

**Environmental
 Resource Solutions**
 Our Science. Your Success.

Source: 7.5' USGS Jacksonville Heights, FL Topographic Quadrangle, ArcGIS Online (USA Topos)

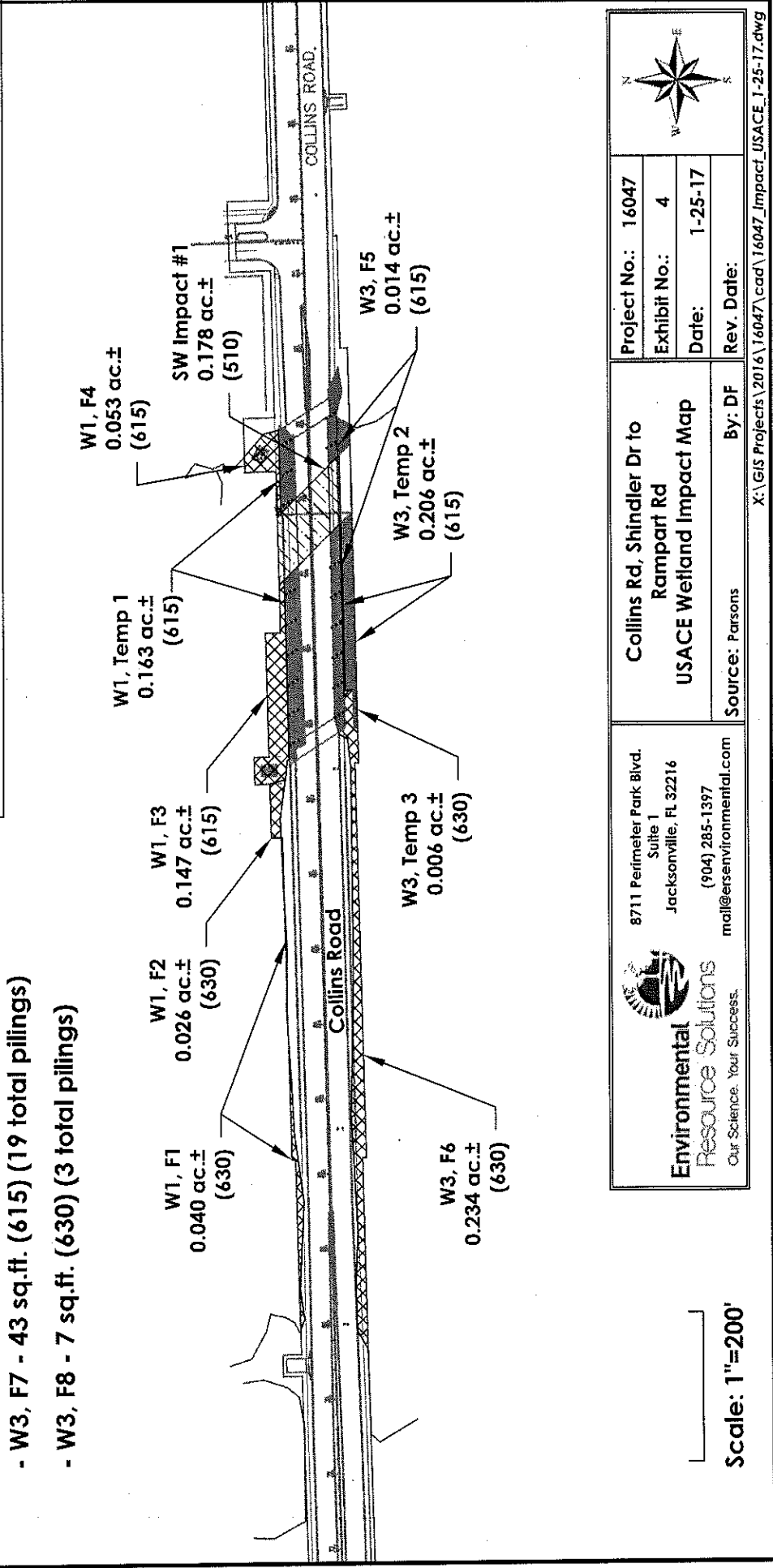
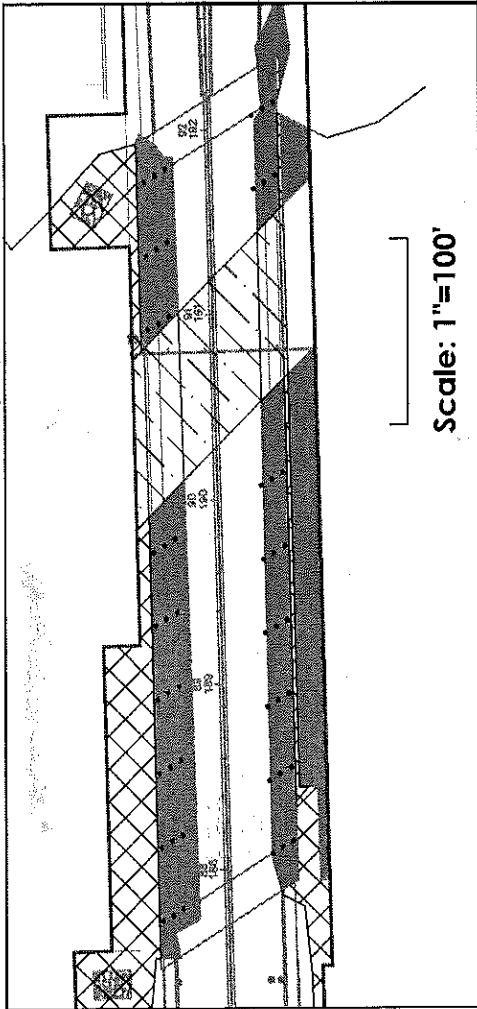
Section: 33, 34, 35
 Township: 3 South
 Range: 25 East


LEGEND

	Wetland Fill Impacts - 0.514 ac.±
	Surface Water Impacts - 0.178 ac.±
	Wetland Temporary Impacts - 0.375 ac.±

■ Piling

- W1, F4 - 61 sq.ft. (615) (27 total pilings)
- W3, F7 - 43 sq.ft. (615) (19 total pilings)
- W3, F8 - 7 sq.ft. (630) (3 total pilings)

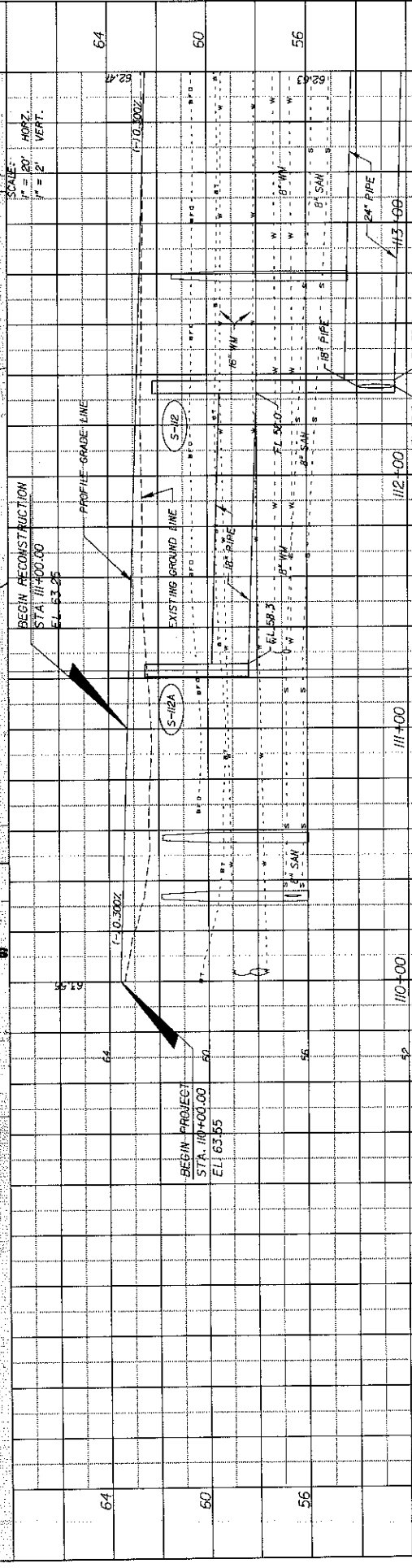
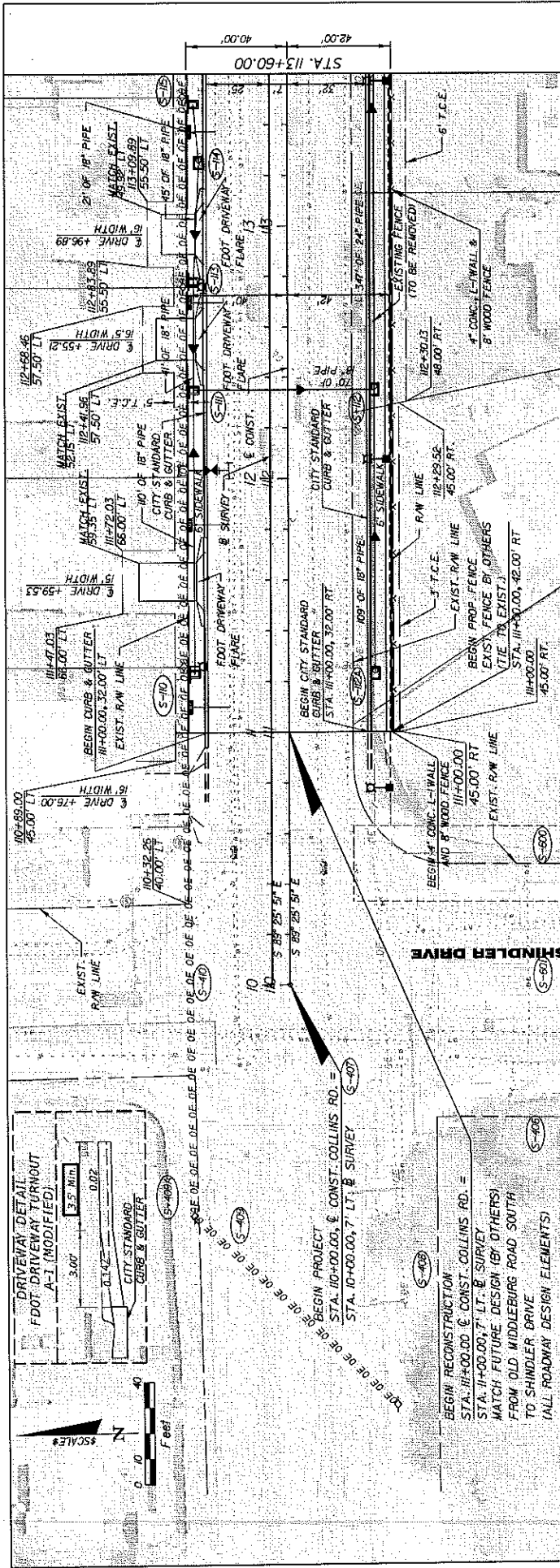


Project No.: 16047	
Exhibit No.: 4	
Date: 1-25-17	
Rev. Date:	

Collins Rd, Shindler Dr to Rampart Rd	By: DF
USACE Wetland Impact Map	
Source: Parsons	


Environmental Resource Solutions
 Our Science. Your Success.

8711 Perimeter Park Blvd.
 Suite 1
 Jacksonville, FL 32216
 (904) 285-1397
 mall@ersenvironmental.com



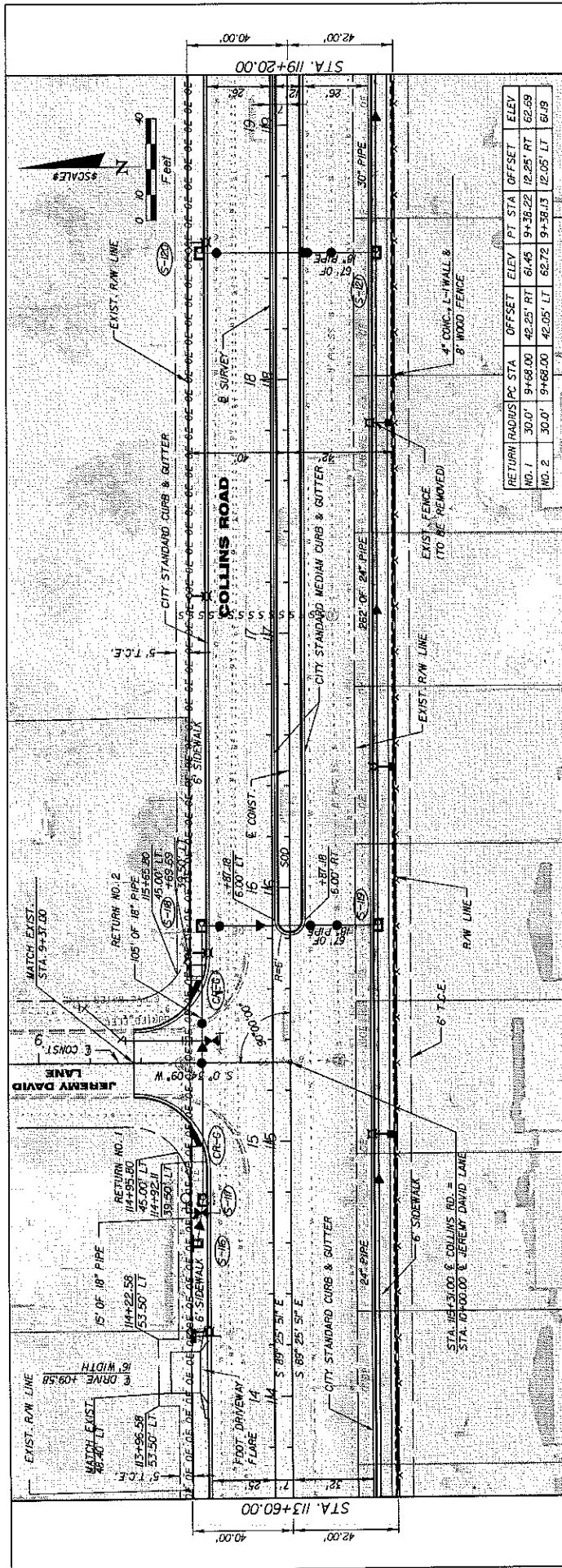
DATE	BY	DESCRIPTION	REVISIONS

PARSONS BRINCKERHOFF
 Capital Plaza Two
 Chicago, IL 60601
 TEL: 312.467.1000
 FAX: 312.467.1001
 WWW.PARSONSBRINCKERHOFF.COM

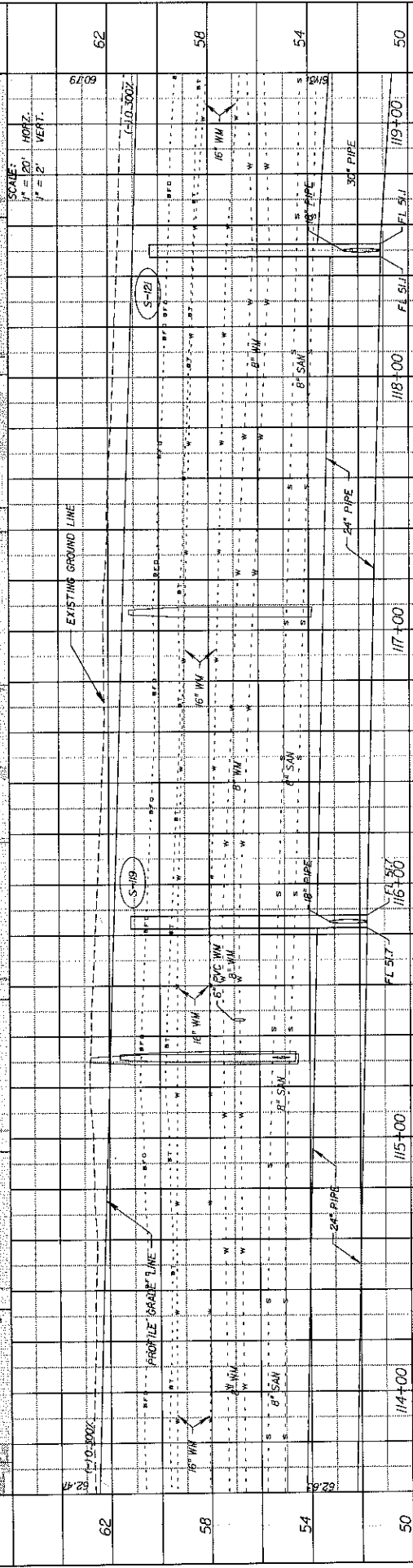
JTAMobilityWorks
 10/17/2006 04:55:58 AM

PLAN & PROFILE OF COLLINS ROAD

SHEET NO. 23



RETURN	RADIUS	PC STA	PT STA	OFFSET	ELEV	PT STA	OFFSET	ELEV
NO. 1	30.0'	9+68.00	42.25' RT	61.45	9+38.22	12.25' RT	62.69	62.69
NO. 2	30.0'	9+68.00	42.05' LT	62.72	9+38.13	12.05' LT	63.19	63.19



DATE	BY	DESCRIPTION	REVISIONS	DATE	BY	DESCRIPTION

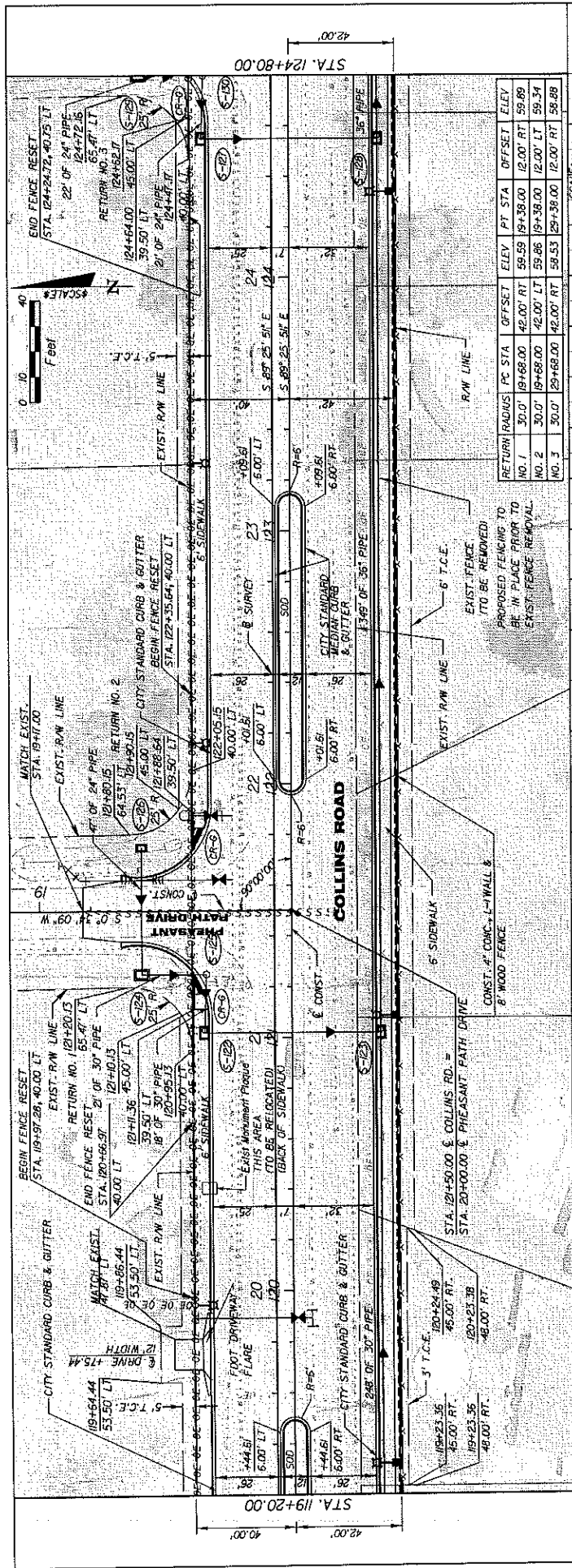
PARSONS BRINCKERHOFF
 Central Plaza Two
 1000
 QUANICO, FL 32002
 CO. REG. NO. 01482
 WILLIAM W. JERSON, P.E.
 P.L. REG. NO. 63086



PLAN & PROFILE (2)
COLLINS ROAD

SHEET NO. 24

8/11/2006 10:55:37 AM
 C:\Users\jwheeler\Desktop\Collins_Road\Collins_Road.dwg



NO.	RETURN RADIUS	PC STA	PT STA	OFFSET	ELEV	PT STA	OFFSET	ELEV
NO. 1	30.0'	123+68.00	124+00.00	42.00' RT	59.59	123+68.00	42.00' RT	59.89
NO. 2	30.0'	123+68.00	124+00.00	42.00' LT	59.86	123+68.00	42.00' LT	59.34
NO. 3	30.0'	123+68.00	124+00.00	42.00' RT	59.53	123+68.00	42.00' RT	59.88

SCALE:	HORIZ.	VERT.
1" = 20'	1" = 2'	1" = 2'

DATE	BY	DESCRIPTION	DATE	BY	DESCRIPTION

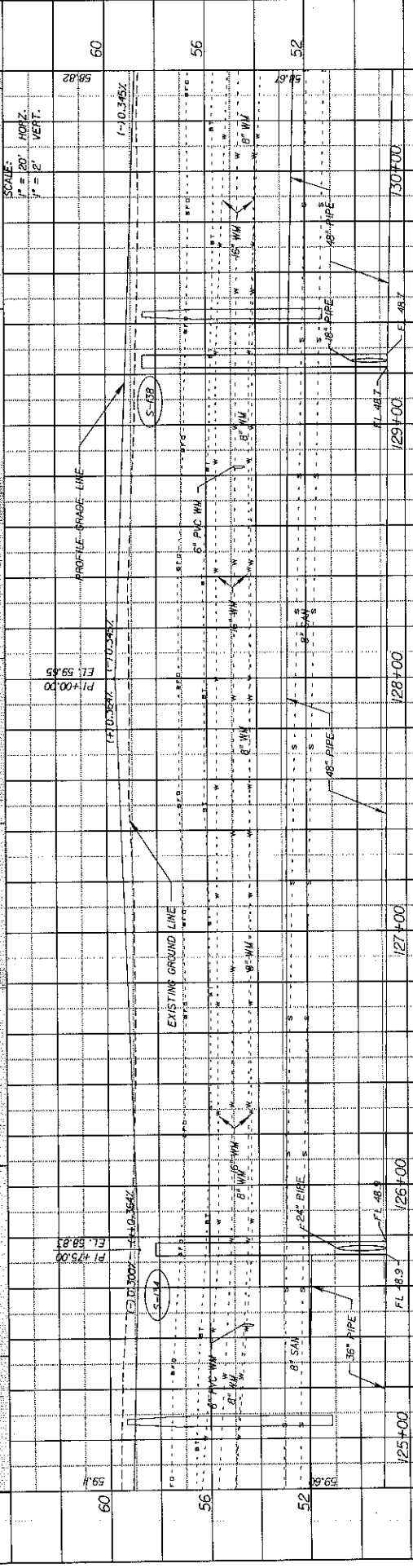
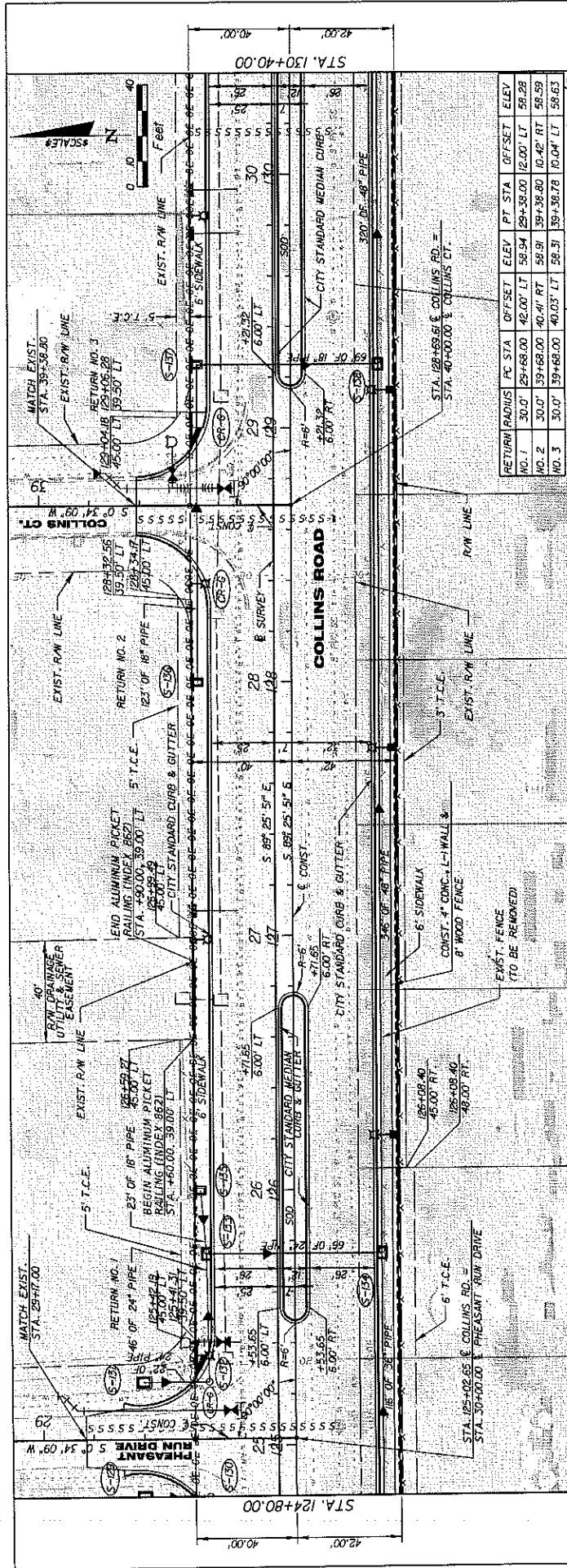
PLAN & PROFILE (3)
COLLINS ROAD

PARSONS BRINCKERHOFF
 Capital Plaza Two
 300 E Pine St., Ste. 1020
 Orlando, FL 32801
 WILLYN M. BRINCKERHOFF
 CHIEF ENGINEER

WTAMobilityWorks

6/11/2008 05:23 AM
 U:\SAP\Projects\08062500\Collins_Rd\Collins_Rd.dwg
 11.00.0000

SHEET NO. 25



PLAN & PROFILE (0)
COLLINS ROAD

SCALE:
1" = 20' HORIZ.
1" = 2' VERT.

REVISIONS

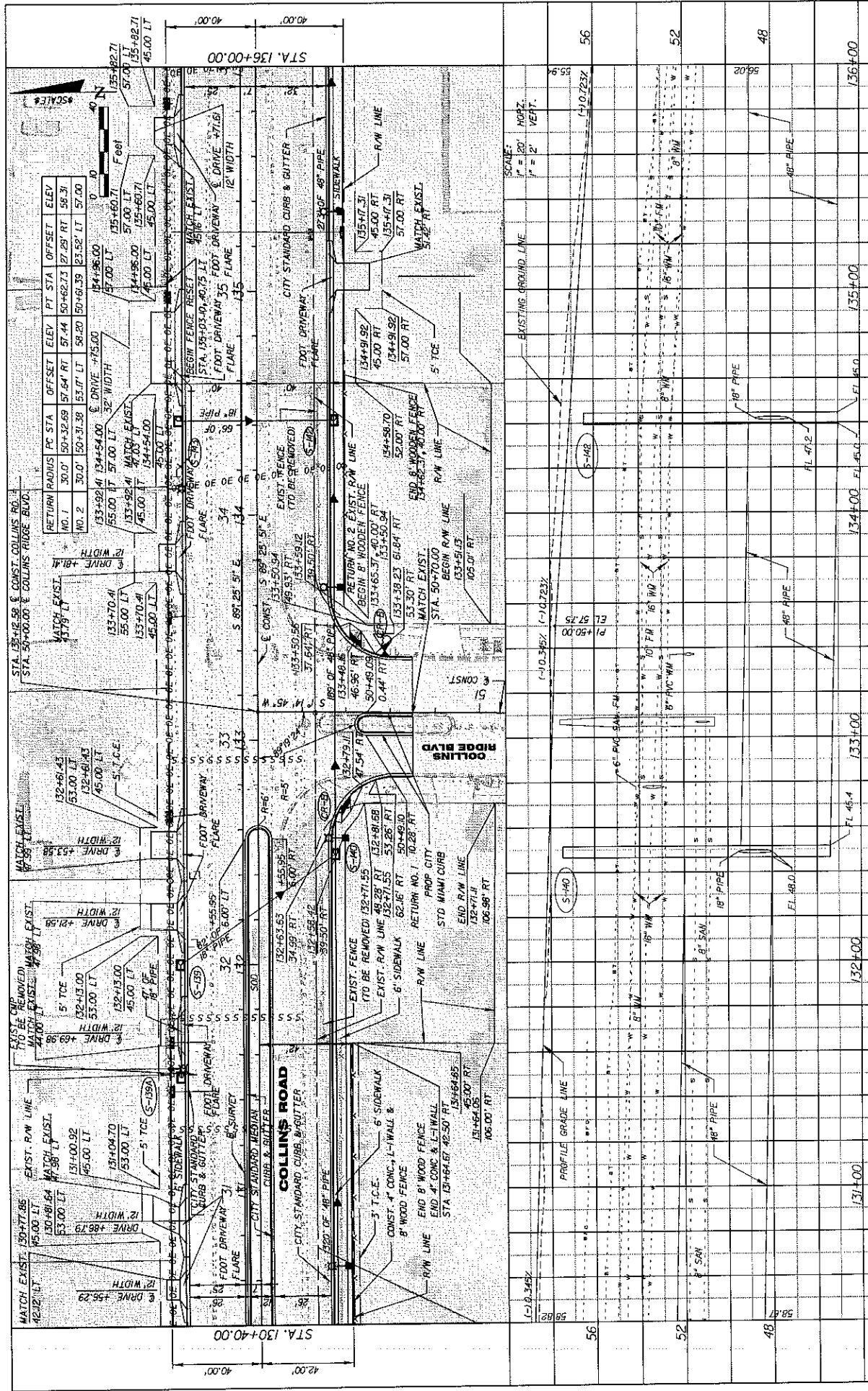
DATE	BY	DESCRIPTION	DATE	BY	DESCRIPTION

PARSONS BRINCKERHOFF
Capital Plaza Two
301 E. Pine St., Ste. 1000
Orlando, FL 32801
Tel: 407.611.1111

WILLIAM M. JENSEN, E.L.
P.L. 012, 013, 025A

JTA MobilityWorks

SHEET NO. 26



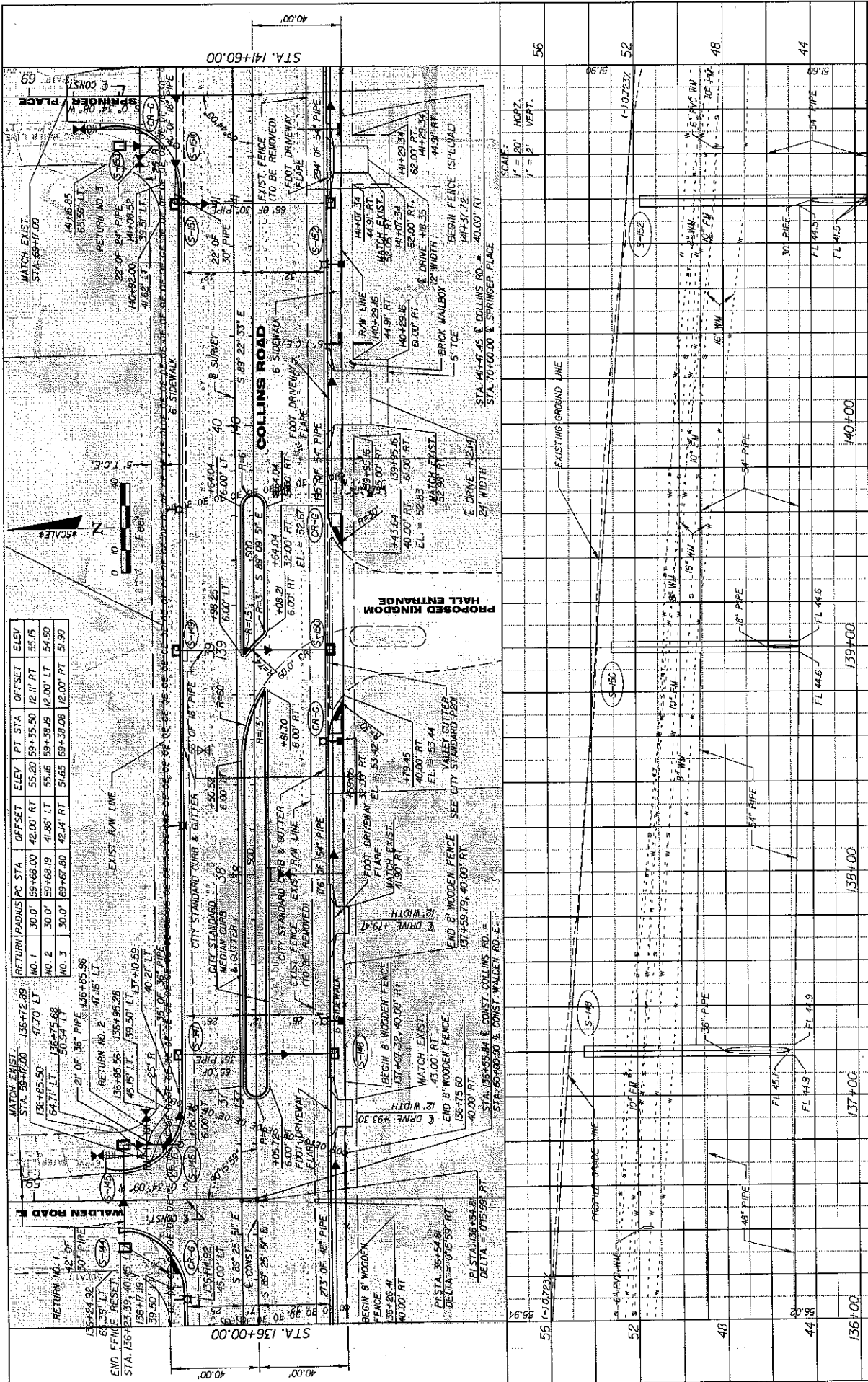
RETURN RADIUS	PC STA	OFFSET	ELEV	PT STA	OFFSET	ELEV
NO. 1	30.0'	50.0	52.89	57.64	RT	57.44
NO. 2	30.0'	50.0	51.38	57.67	LT	58.20
				50.61	RT	53.52
				51.52	LT	57.00

DATE	BY	DESCRIPTION	REVISIONS	DATE	BY	DESCRIPTION

PARSONS BRINCKERHOFF
 Capital Plaza Two
 601 E. Pine St., Ste. 1020
 Charlotte, NC 28202
 TEL: 704.376.1100
 FAX: 704.376.1102

JTM JTM MobilityWorks
 1000
 1000
 1000

PLAN & PROFILE (S)
COLLINS ROAD
 10/17/2008
 PROJECT: JTM
 10/17/2008
 10/17/2008
 10/17/2008



NO.	RETURN	RADIUS	PC STA.	OFFSET	ELEV.	PT STA.	OFFSET	ELEV.
NO. 1	30.0'	59+68.00	42.00' RT	55.20	59+35.50	12.00' RT	55.15	54.80
NO. 2	30.0'	59+68.19	41.86' LT	55.16	59+38.19	12.00' LT	54.80	54.80
NO. 3	30.0'	59+67.80	42.14' RT	51.65	59+38.08	12.00' RT	51.90	51.90

NO.	RETURN	RADIUS	PC STA.	OFFSET	ELEV.	PT STA.	OFFSET	ELEV.
NO. 1	30.0'	59+68.00	42.00' RT	55.20	59+35.50	12.00' RT	55.15	54.80
NO. 2	30.0'	59+68.19	41.86' LT	55.16	59+38.19	12.00' LT	54.80	54.80
NO. 3	30.0'	59+67.80	42.14' RT	51.65	59+38.08	12.00' RT	51.90	51.90

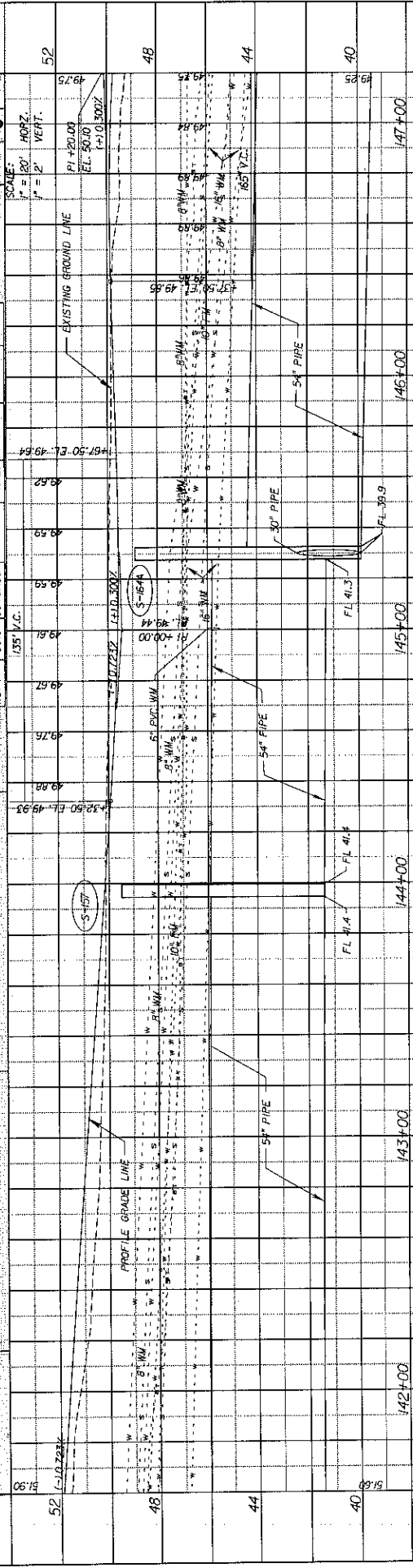
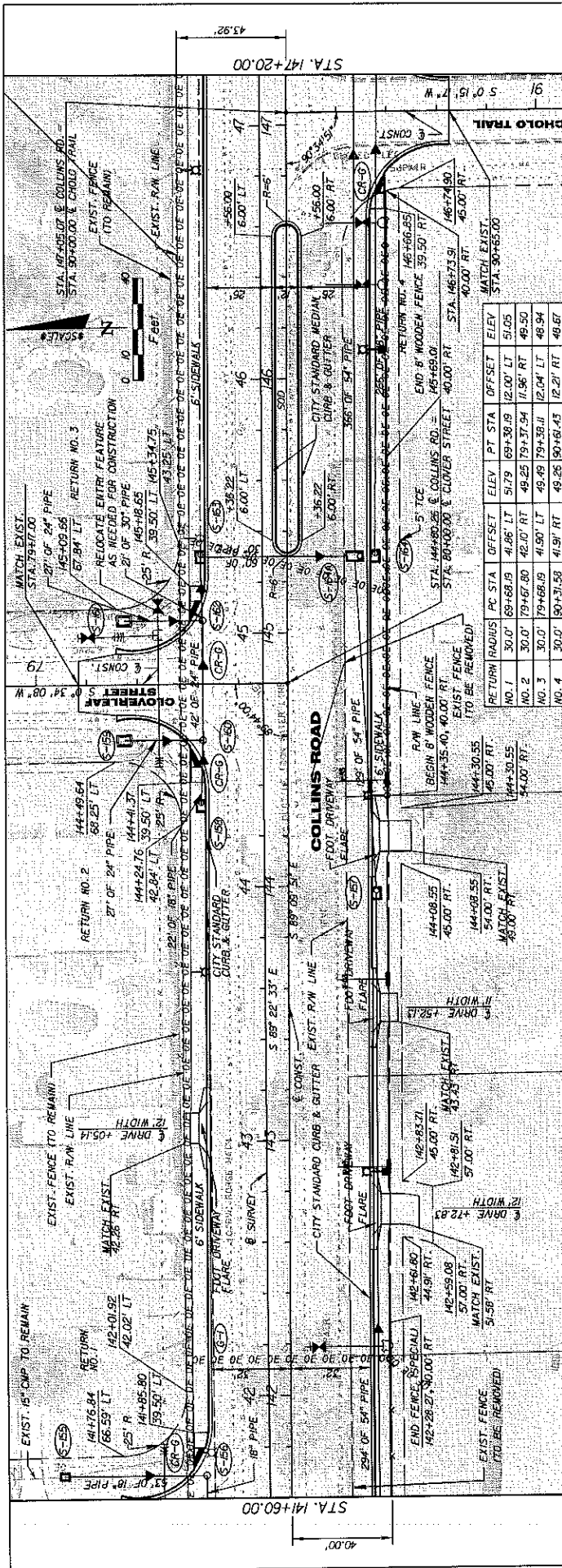
DATE	BY	DESCRIPTION	REVISIONS	DATE	BY	DESCRIPTION

PARSONS BRINCKERHOFF
 Capital Plaza Two, Ste. 1020
 303 E Pine St., Ste. 1020
 Grand Rapids, MI 49503
 DR. CLAYTON L. TIGER
 WILLIAM H. JOHNSON, P.E.
 TL. REC. NO. 02393

PLAN & PROFILE (6)
COLLINS ROAD

SCALE:
 1" = 20' HORZ.
 1" = 2' VERT.

STA. 141+60.00
 STA. 140+00
 STA. 139+00
 STA. 138+00
 STA. 137+00
 STA. 136+00



NO.	RADIUS	PC STA	PT STA	OFFSET	ELEV
NO. 1	30.0'	69+68.19	41.86'	51.79	69+36.19
NO. 2	30.0'	79+67.80	42.00'	49.25	79+37.54
NO. 3	30.0'	79+68.19	41.90'	49.49	79+38.11
NO. 4	30.0'	90+31.58	41.91'	49.28	90+16.43

PLAN & PROFILE (P)
COLLINS ROAD

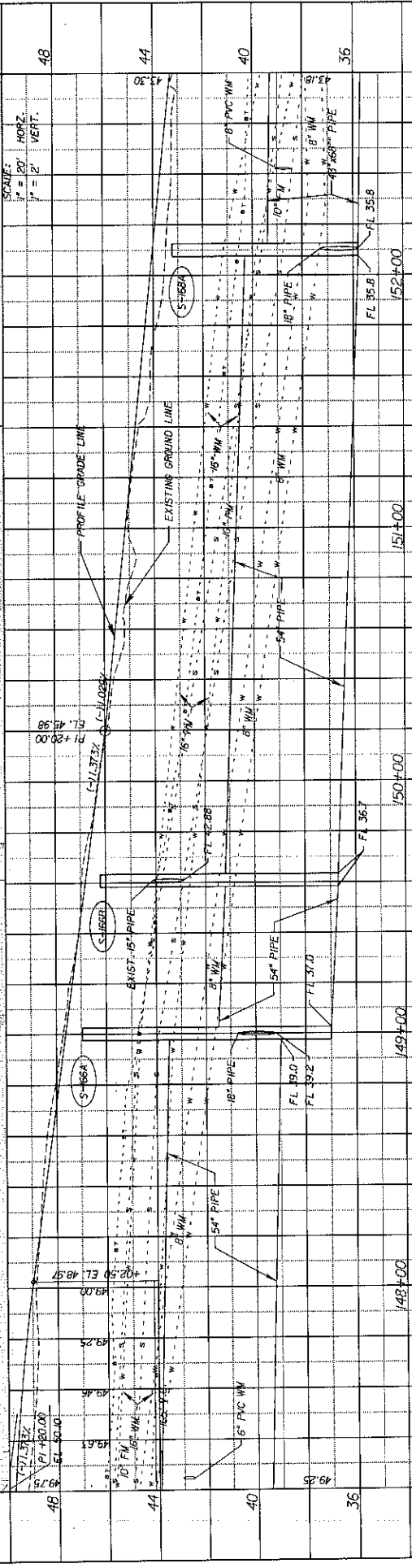
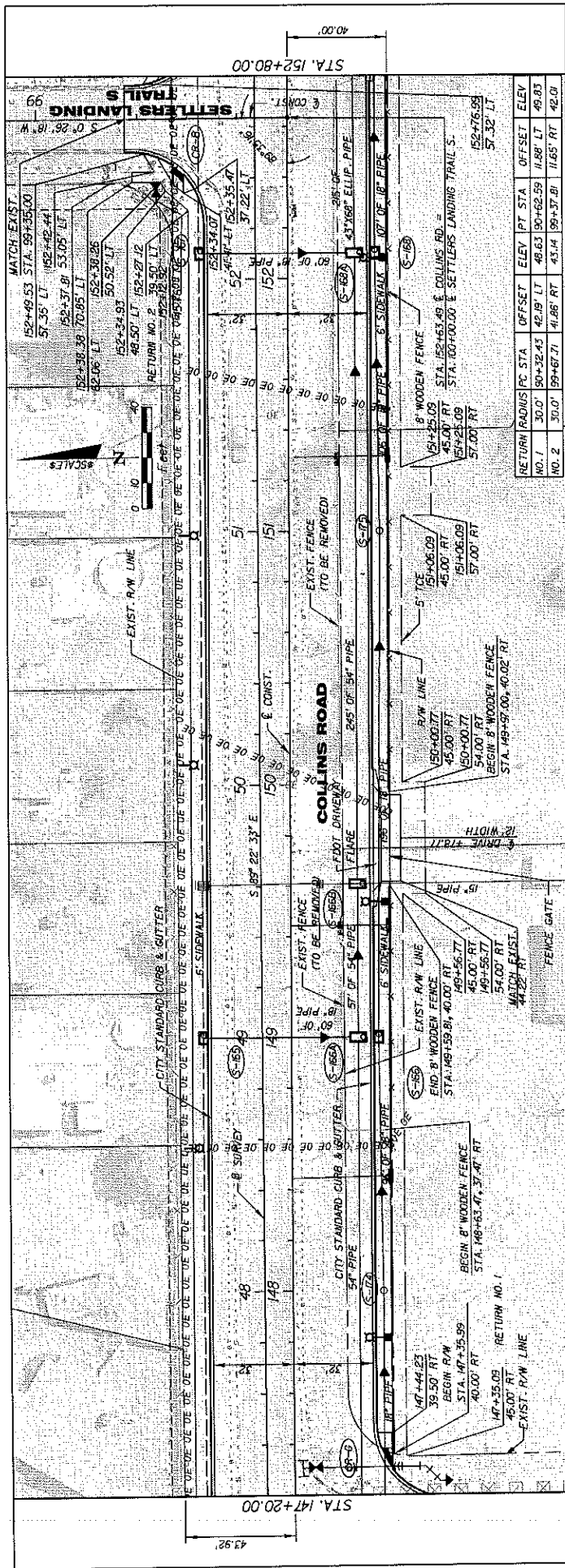
PARSONS BRINCKERHOFF
Capital Plaza Two
Chicago, IL 60601
Tel: 312.281.1000
Fax: 312.281.1000

JT MobilityWorks

WILLIAM B. JOHNSON, P.E.
T. REX W. GORDY

DATE	BY	DESCRIPTION	REVISIONS

SHEET NO. 29



NO.	RETURN RADIUS	PC STA	OFFSET	ELEV	PT STA	OFFSET	ELEV
NO. 1	30.0'	90+32.43	42.8'	48.63	90+32.89	1.88'	49.83
NO. 2	30.0'	99+67.71	41.86'	43.14	99+37.81	11.65'	42.00

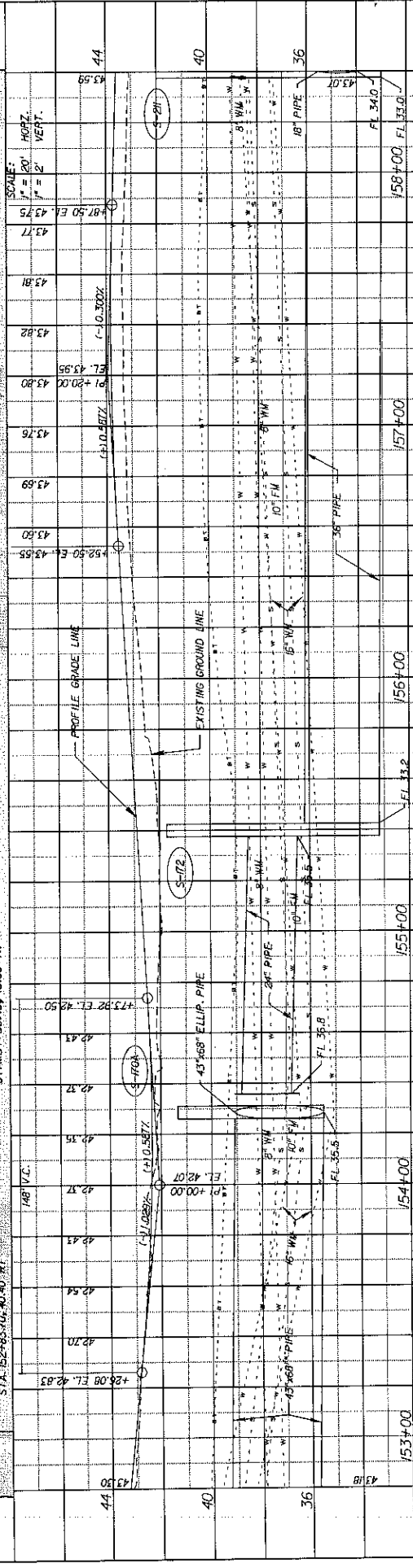
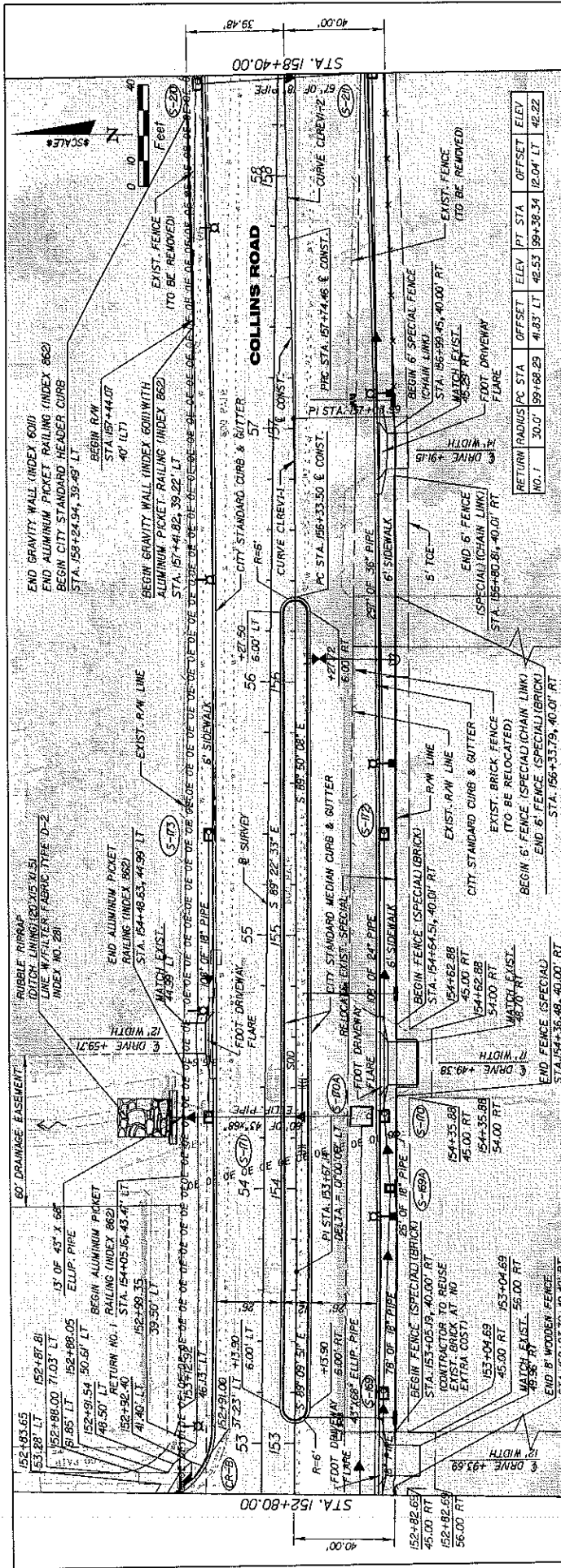
SCALE:
 1" = 20' HORIZ.
 1" = 2' VERT.

DATE	BY	DESCRIPTION	REVISIONS	DATE	BY	DESCRIPTION

PARSONS BRINCKERHOFF
 Capital Plan Two, Sta. 1020
 Collins Rd., Sta. 1020
 COLLINS RD., STA. 1020
 WILLIAM B. BRINCKERHOFF, P.E.
 L. 1020, N. 1020



PLAN & PROFILE (8)
COLLINS ROAD



DATE	BY	DESCRIPTION	REVISIONS	DATE	BY	DESCRIPTION

NO.	RETURN RADIUS	PC STA	OFFSET	ELEV	PT STA	OFFSET	ELEV	PT STA	OFFSET	ELEV
1	30.0'	59+68.29	41.83	42.53	59+36.34	12.04	42.22			

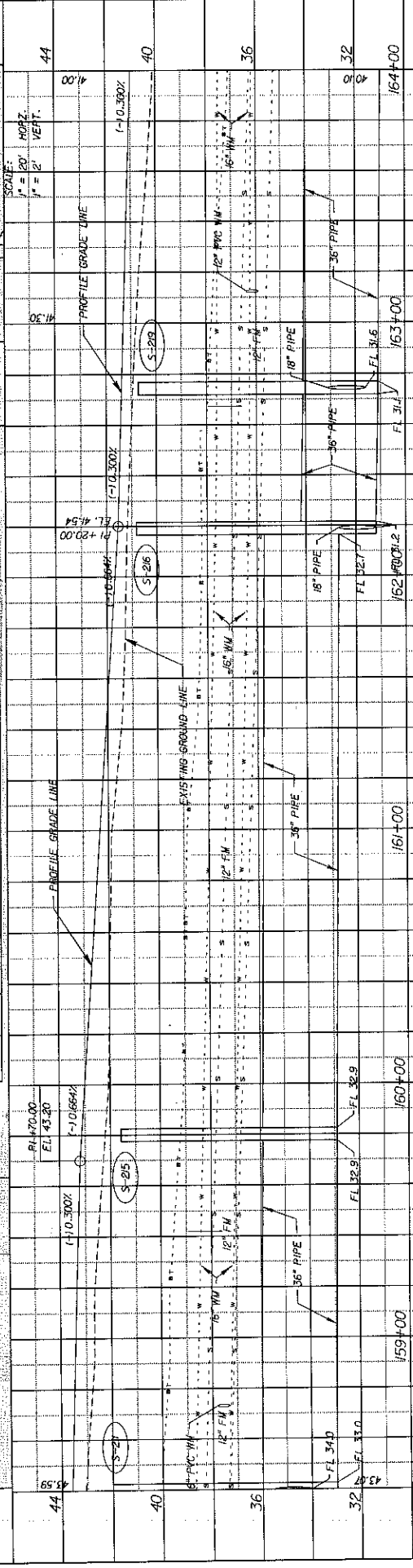
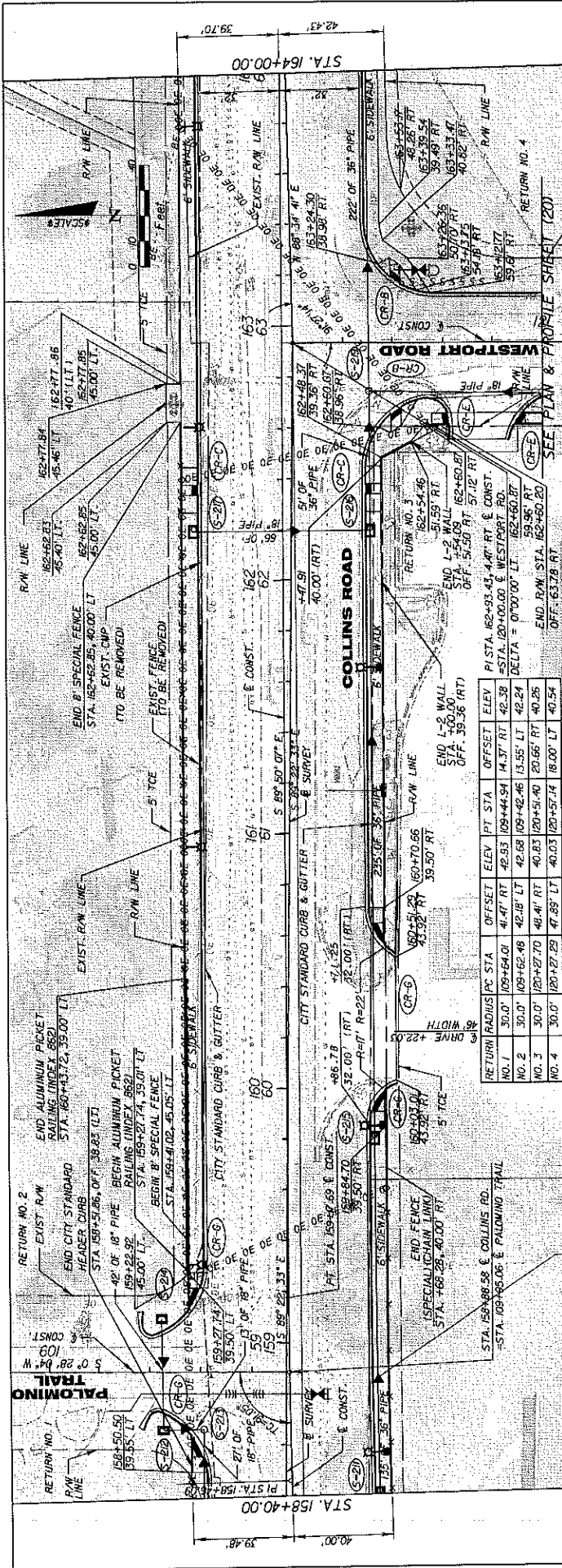
STATION	DESCRIPTION
153+00	43.50
154+00	43.75
155+00	43.81
156+00	43.82
157+00	43.80
158+00	43.75

PARSONS BRINCKERHOFF
 Capital Plaza Two
 300 E. Pine Street
 Des Moines, IA 50319
 TEL: 515.281.6000

JT MobilityWorks
 1000 13th St
 Des Moines, IA 50319
 TEL: 515.281.6000

PLAN & PROFILE (9)
COLLINS ROAD

SHEET NO. 31



RETURN RADIUS PC STA OFFSET ELEV PT STA OFFSET ELEV

NO.	PC STA	OFFSET RT	ELEV	PT STA	OFFSET LT	ELEV
NO. 1	109+64.00	4.47	42.53	109+44.94	14.37	42.38
NO. 2	109+62.48	42.18	42.58	109+42.46	13.55	42.24
NO. 3	120+27.70	46.41	40.83	120+51.40	20.65	40.28
NO. 4	120+27.28	47.89	40.03	120+52.14	18.00	40.54

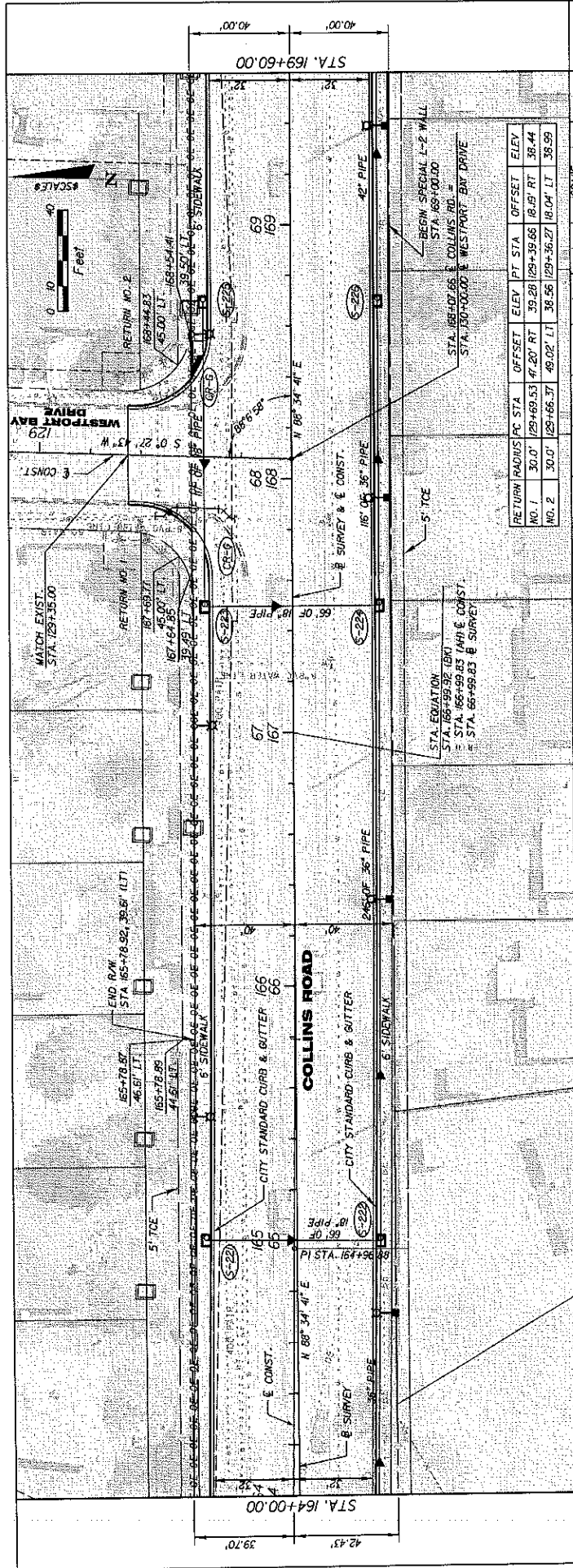
DATE	BY	DESCRIPTION	REVISIONS	DATE	BY	DESCRIPTION

PARSONS BRINCKERHOFF
 Capital Plaza Two
 1000
 Orlando, FL 32801
 TEL: 407.639.7000
 FAX: 407.639.7001

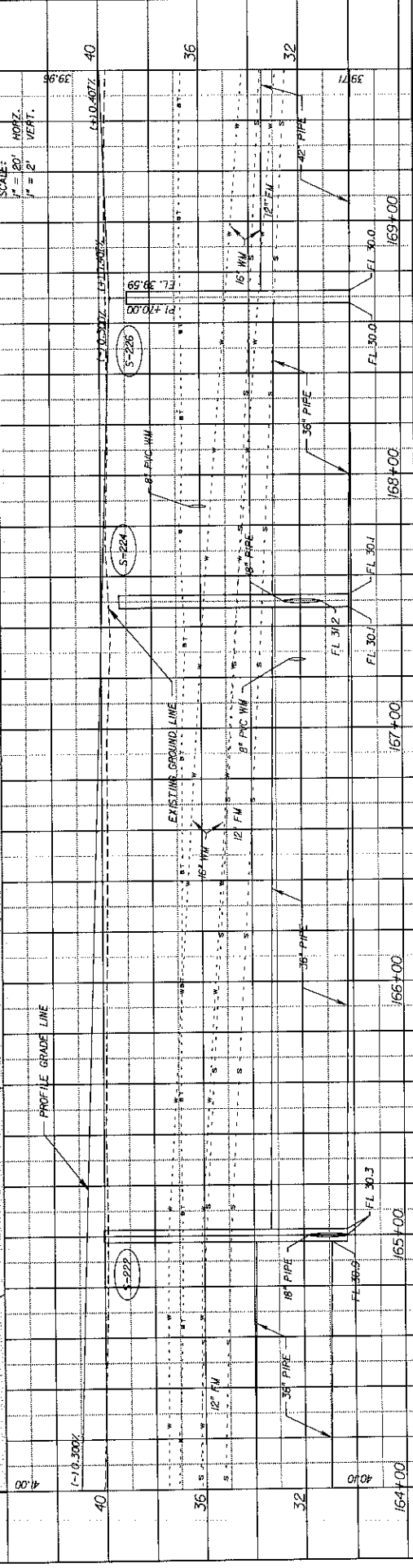
JTAMobilityWorks
 100259 AP
 02/11/2008

**PLAN & PROFILE (10)
 COLLINS ROAD**

SHEET NO. 32



NO.	RETURN	RADIUS	PC STA	PT STA	OFFSET	ELEV	PT STA	OFFSET	ELEV
NO. 1	30.0'	129+69.53	4+20' RT	39.28	129+39.66	18.61	RT	38.44	38.44
NO. 2	30.0'	129+66.37	49.02' LT	38.56	129+36.27	19.04	LT	38.59	38.59



SCALE:
 1" = 20' HORZ.
 1" = 2' VERT.

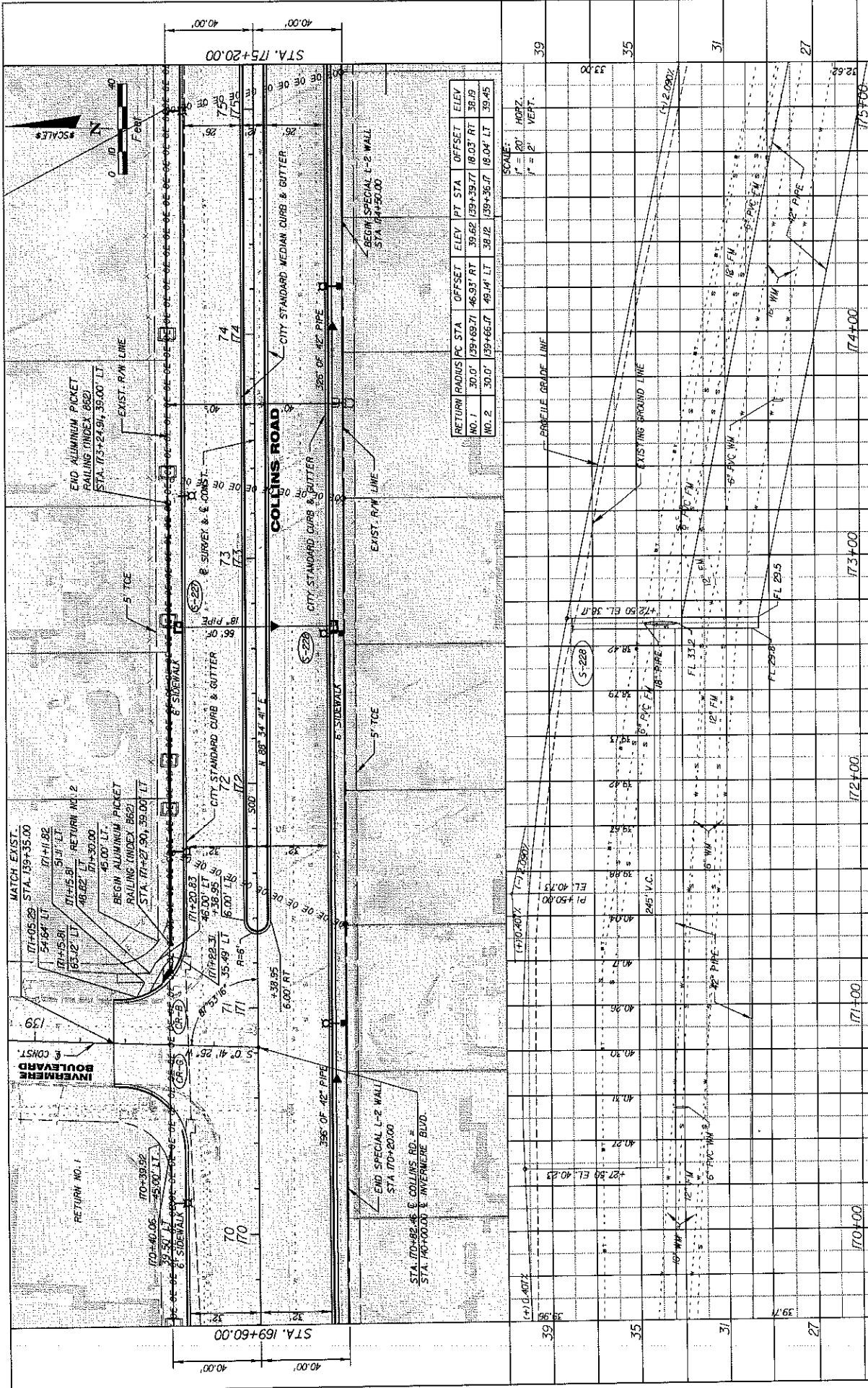
DATE	BY	DESCRIPTION	REVISIONS	DATE	BY	DESCRIPTION

PARSONS BRINCKERHOFF
 Capital Plaza Two
 1000 Granddams Blvd., Suite 1000
 Granddams, IL 60131
 DR. GREG W. DIERZ
 WILLIAM W. DUNCAN, P.E.
 FL. REG. NO. 60968

JTAMobilityWorks
 801/208-1100

PLAN & PROFILE (11)
COLLINS ROAD

SHEET NO. 33



PLAN & PROFILE (02)
COLLINS ROAD

DATE: _____ BY: _____ DATE: _____

REVISIONS

NO.	DESCRIPTION	DATE	BY

DESCRIPTION: _____

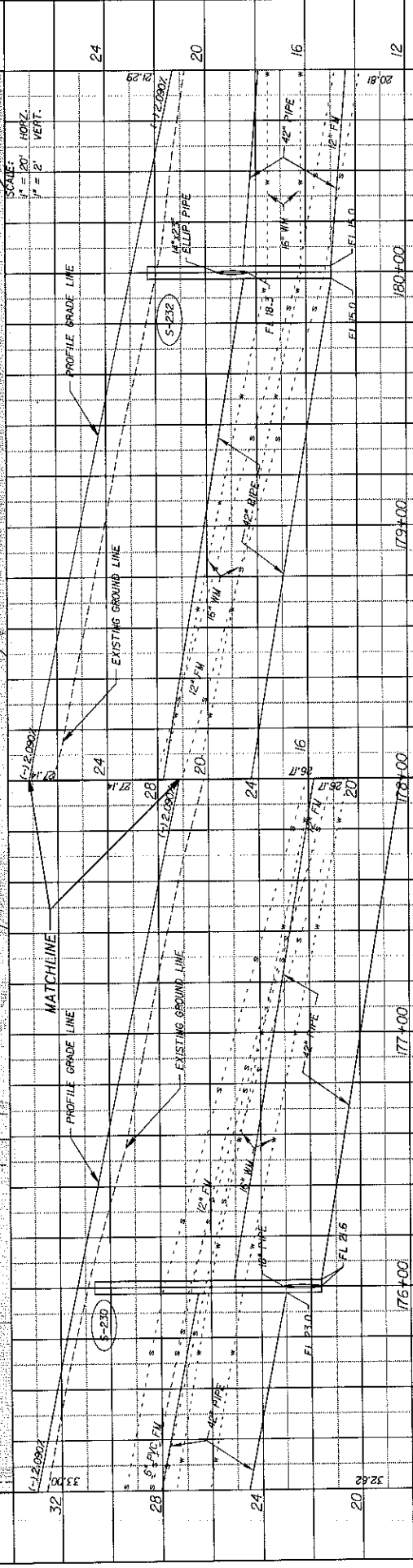
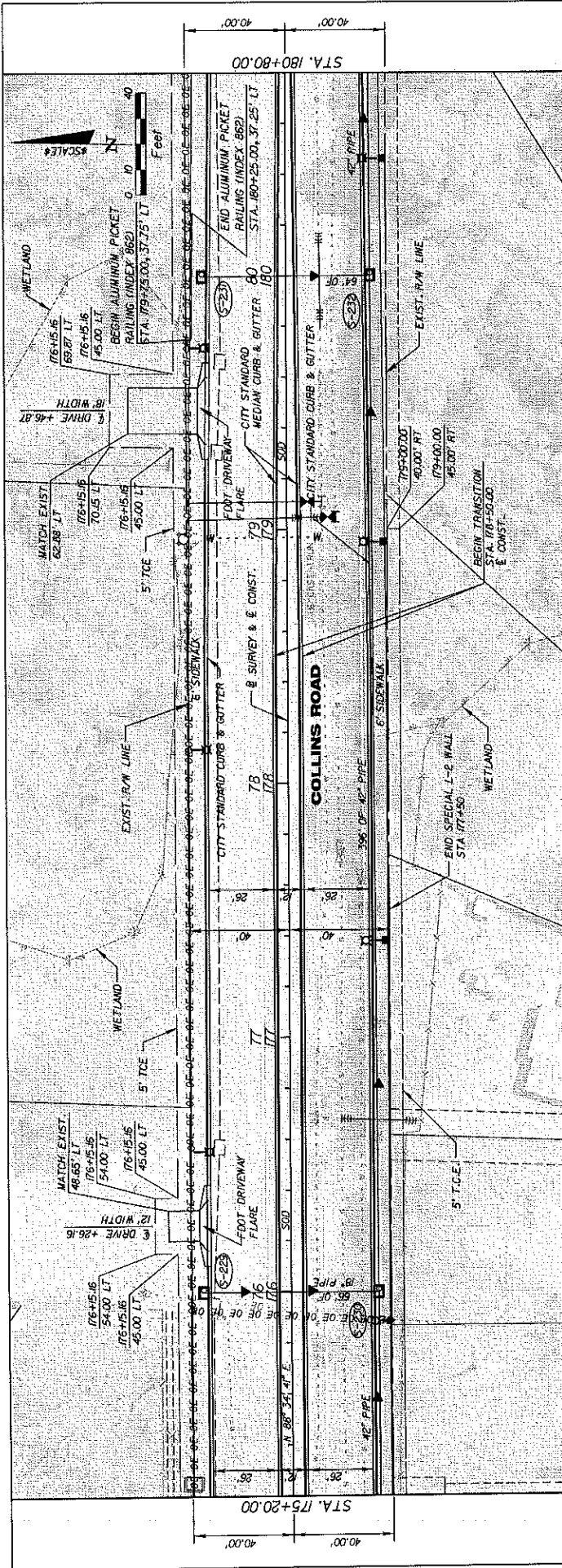
DATE: _____ BY: _____

PARSONS BRINCKERHOFF
 Capital Area Two
 300 E. Pine St., Ste. 1020
 Dallas, TX 75201
 TEL: 972.362.6100 FAX: 972.362.6101
 WILLIAM N. JOHNSON, P.E.
 H. IRENE M. ESKER

ITM MobilityWorks

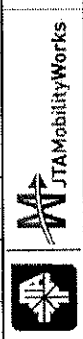
SCALE: 1" = 20' HORZ.
 1" = 2' VERT.

SHEET NO. 34



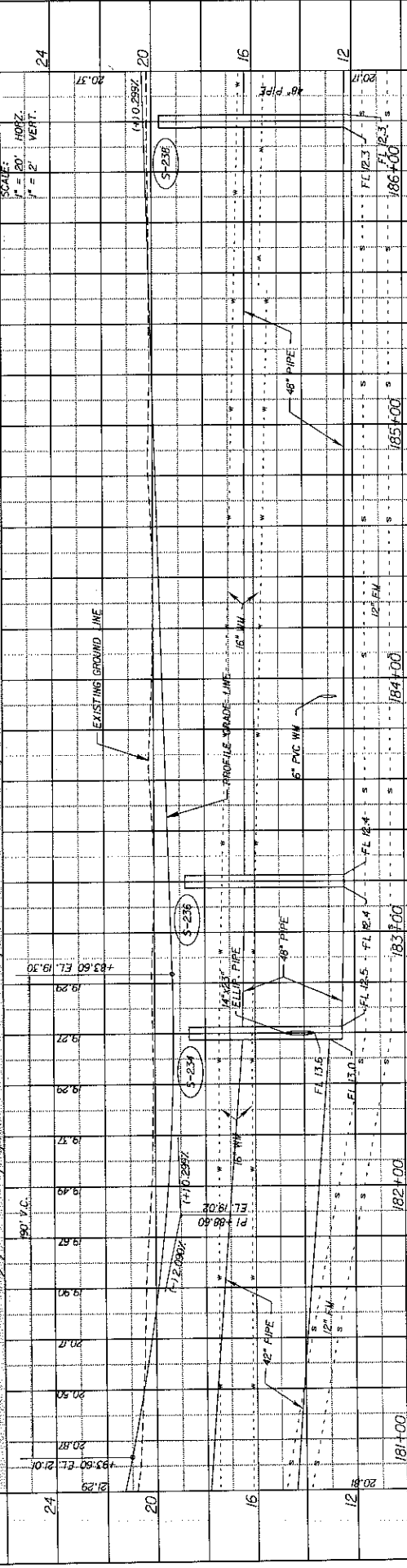
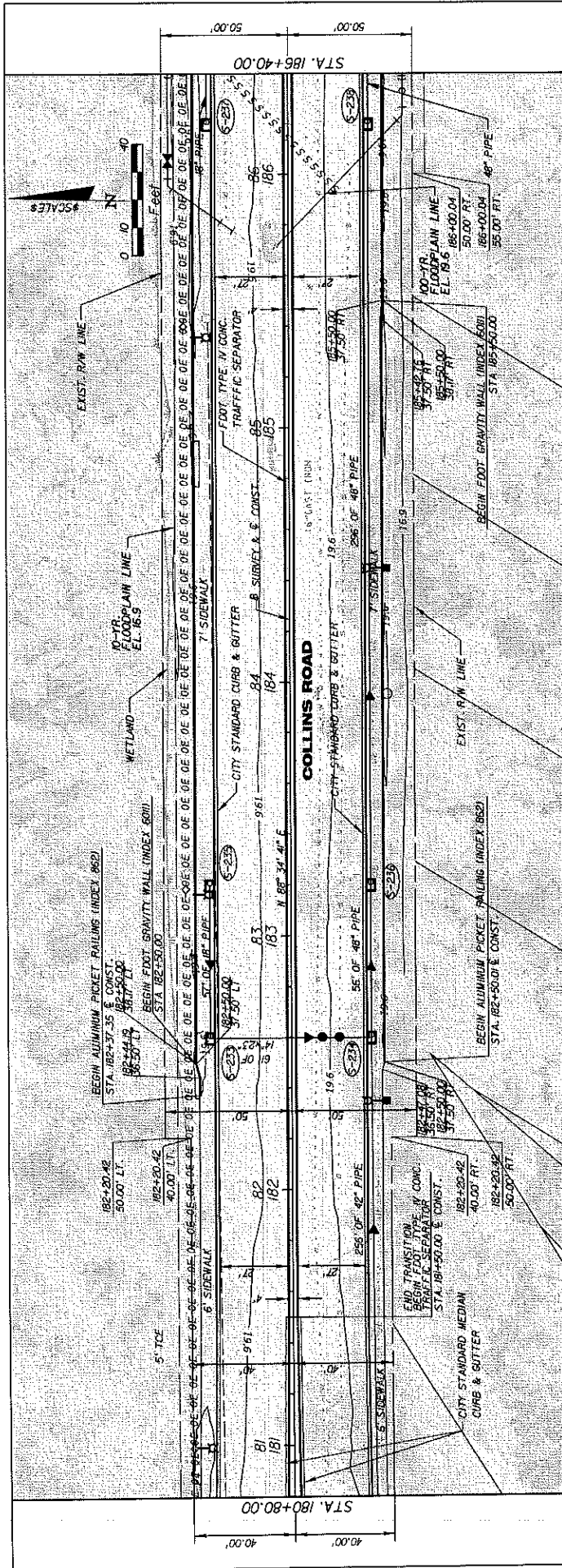
DATE	BY	DESCRIPTION	REVISIONS	DATE	BY	DESCRIPTION

PARSONS BRINCKERHOFF
 Capital Plaza Two
 1775 N. W. 22nd St.
 Fort Lauderdale, FL 33304
 TEL: 954.333.0100
 FAX: 954.333.0101



**PLAN & PROFILE (13)
 COLLINS ROAD**

SHEET NO. 35



DATE	BY	DESCRIPTION	REVISIONS	DATE	BY	DESCRIPTION

PARSONS BRINCKERHOFF
 Capital Plaza Two
 100 Maple Street
 Cambridge, MA 02142
 TEL: 617.552.3000
 FAX: 617.552.3001
 DR. GERT W. JUNG

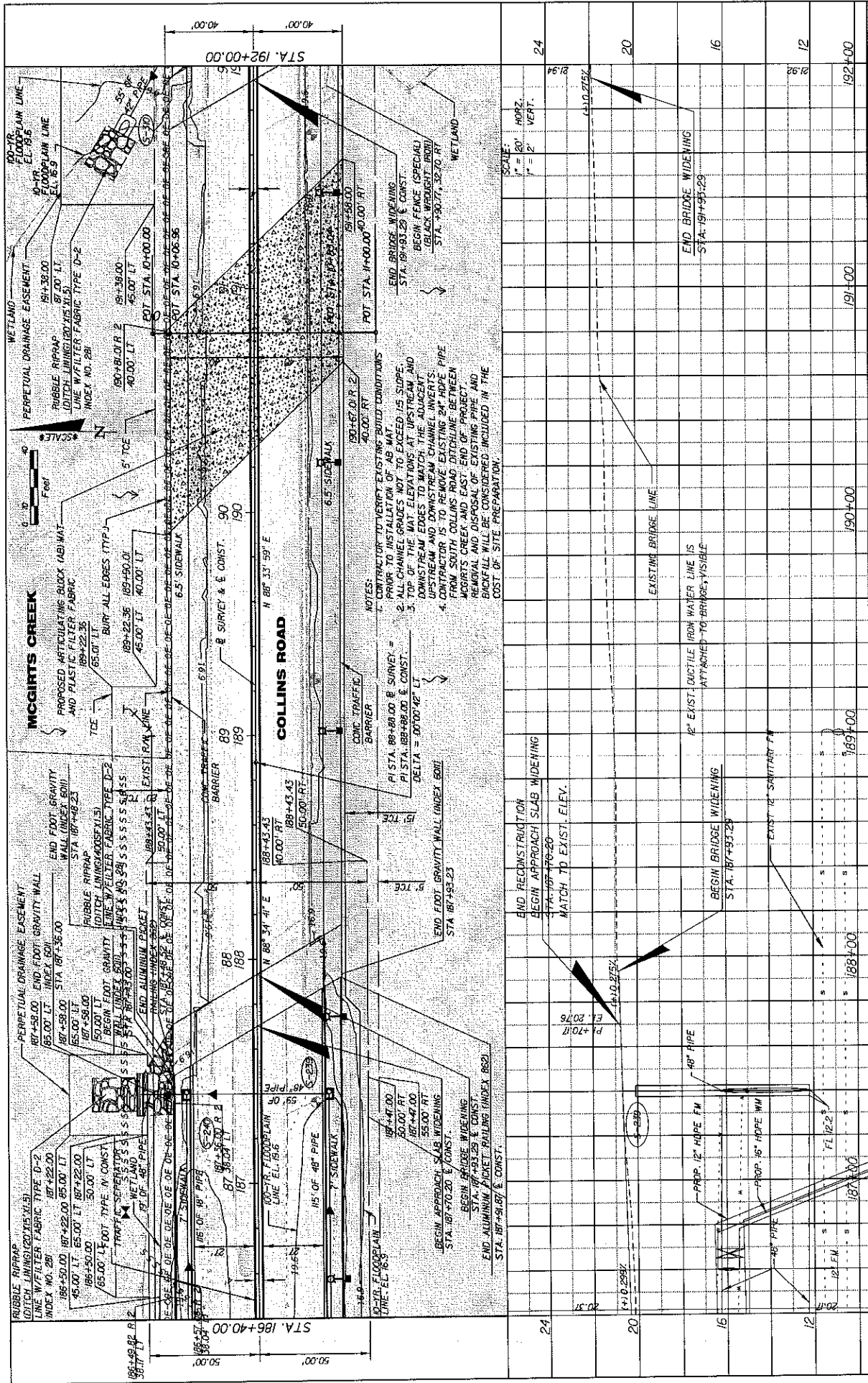
JTA MobilityWorks

WILLIAM M. JARVIS P.E.
 EL. REG. NO. 10384

PLAN & PROFILE (14)
COLLINS ROAD

8/11/2016 11:03:09 AM I:\09\Project\09805506\Collins_Road\wms\wjr.dwg

SHEET NO.	36
-----------	----



SCALE:
 1" = 20' HORZ.
 1" = 2' VERT.

- NOTES:
- CONTRACTOR TO VERIFY EXISTING BUILD CONDITIONS PRIOR TO INSTALLATION OF AS MAT
 - ALL CHANNEL GRADES NOT TO EXCEED 1% SLOPE
 - TOP OF THE MAT ELEVATIONS AT UPSTREAM AND DOWNSTREAM EDGES TO MATCH THE ADJACENT UPSTREAM AND DOWNSTREAM CHANNELS 24\"/>

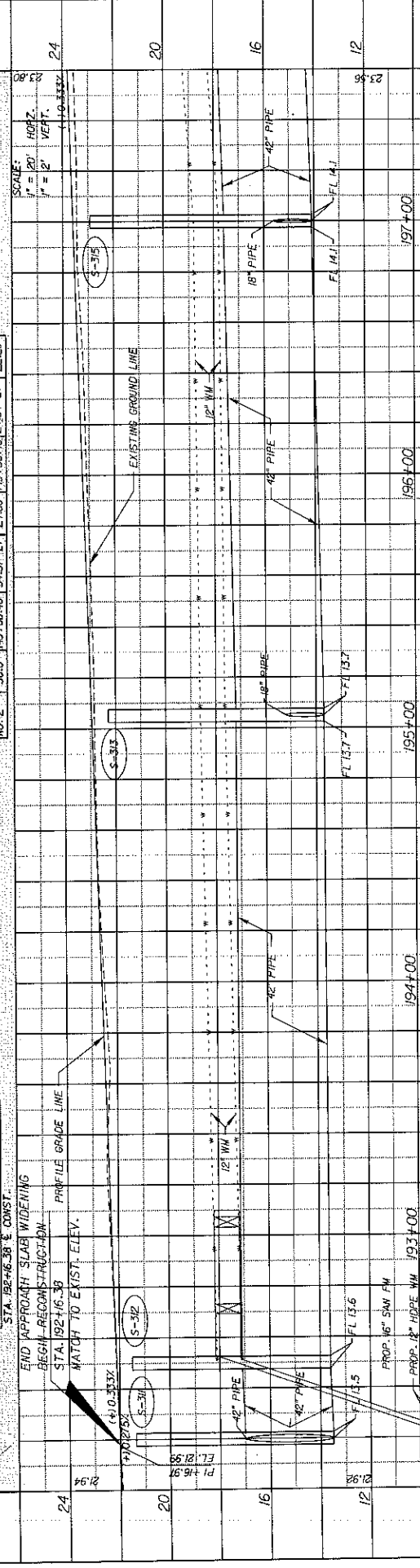
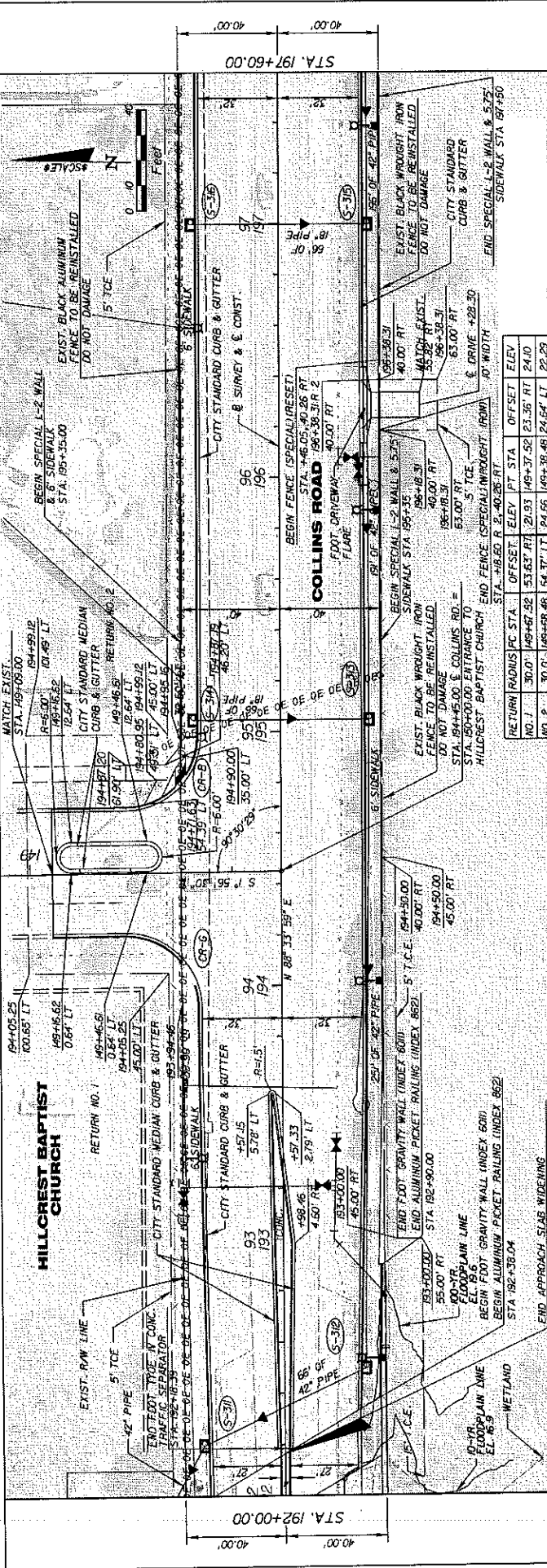
DATE	BY	DESCRIPTION	REVISIONS

PARSONS BRINCKERHOFF
 Capital Plaza Two
 301 E Pine St., Ste. 1000
 Chicago, IL 60601
 TEL: 312.467.1012
 WWW.PB.COM

WITAMobilityWorks
 1100 W. Lake St.
 Chicago, IL 60606
 TEL: 773.888.8888
 WWW.WITAMOBILITYWORKS.COM

PLAN & PROFILE (15)
COLLINS ROAD

SHEET NO. **37**



NO. 1	NO. 2	PC STA	PVI STA	PT STA	OFFSET	ELEV.
30.0	30.0	194+98.48	194+98.48	194+98.48	24.66	24.66
		194+98.48	194+98.48	194+98.48	24.66	24.66
		194+98.48	194+98.48	194+98.48	24.66	24.66
		194+98.48	194+98.48	194+98.48	24.66	24.66
		194+98.48	194+98.48	194+98.48	24.66	24.66

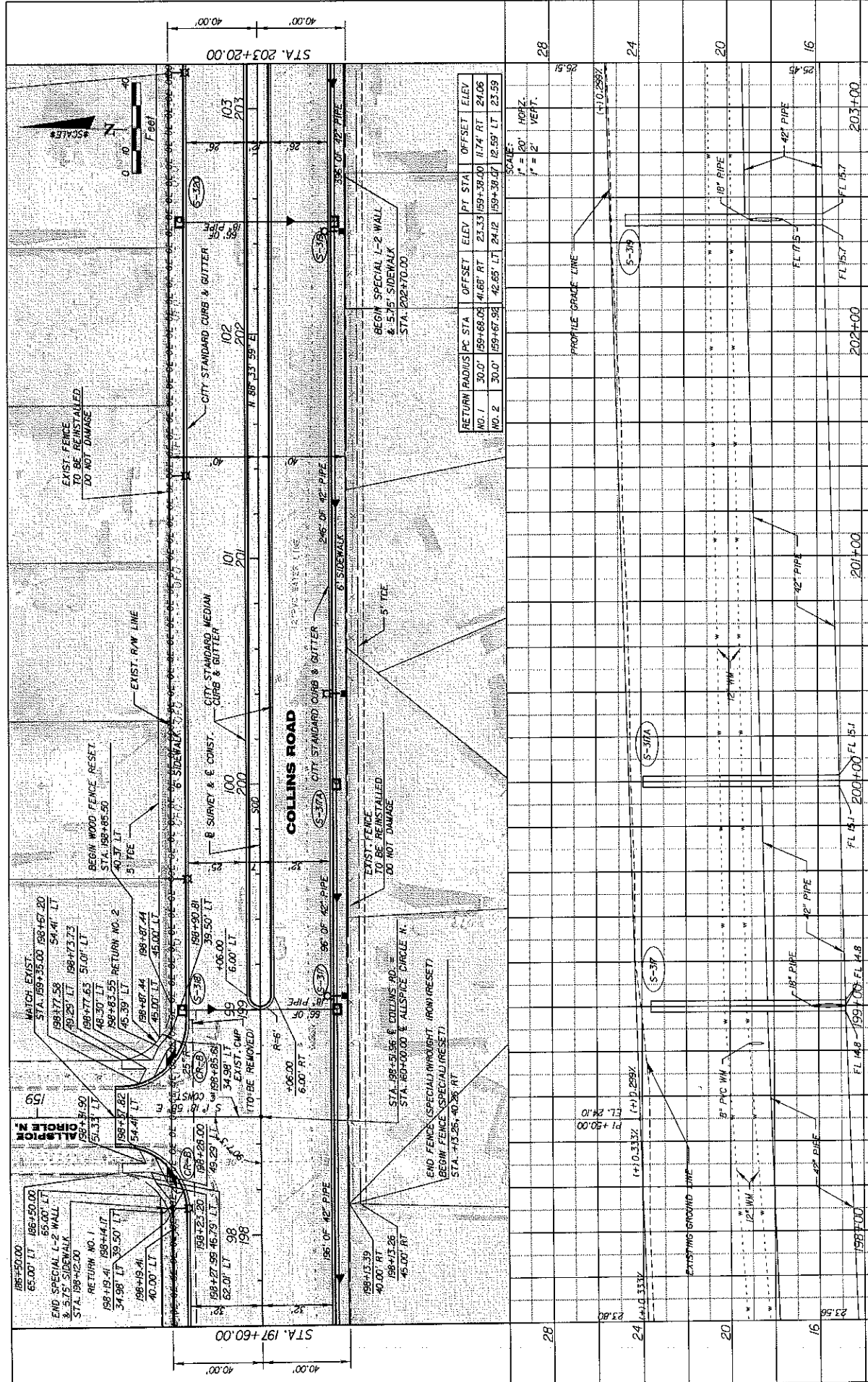
DATE	BY	DESCRIPTION	REVISIONS	DATE	BY	DESCRIPTION

PARSONS BRINCKERHOFF
 Capital Plaza Two
 Collins Blvd., Suite 1020
 Dallas, Texas 75201
 TEL: 972.336.3200
 FAX: 972.336.3290

JTA MobilityWorks
 JTA MobilityWorks is a leader in providing innovative solutions for the transportation industry.

PLAN & PROFILE 06
COLLINS ROAD

SCALE: HORIZ. 1" = 40' VERT. 1" = 2'
 SHEET NO. 38



RETURN	RADIUS	PC STA	PT STA	OFFSET	ELEV	PT STA	OFFSET	ELEV
NO. 1	30.0'	159+68.00	174.00	4.66'	RT	24.06		
NO. 2	30.0'	159+67.28	174.00	4.66'	LT	23.59		



EXIST FENCE TO BE REINSTALLED DO NOT DAMAGE

BEGIN WOOD FENCE RESET STA. 198+65.50

EXIST FENCE TO BE REINSTALLED DO NOT DAMAGE

END FENCE (SPECIAL) W/RIGHT IRON (RESET) BEGIN FENCE (SPECIAL) (RESET) STA. 193.25, 40.28 RT

SCALE:
1" = 10' HORIZ.
1" = 2' VERT.

PLAN & PROFILE (17)
COLLINS ROAD

PARSONS BRINCKERHOFF
3000 Peachtree Road
Atlanta, GA 30309
DR. C.E.T. W. SIBBE

WILLIAM B. JENSEN, P.E.

FL. REG. NO. 00093

FL. REG. NO. 00093

JTA MobilityWorks

SHEET NO. 39

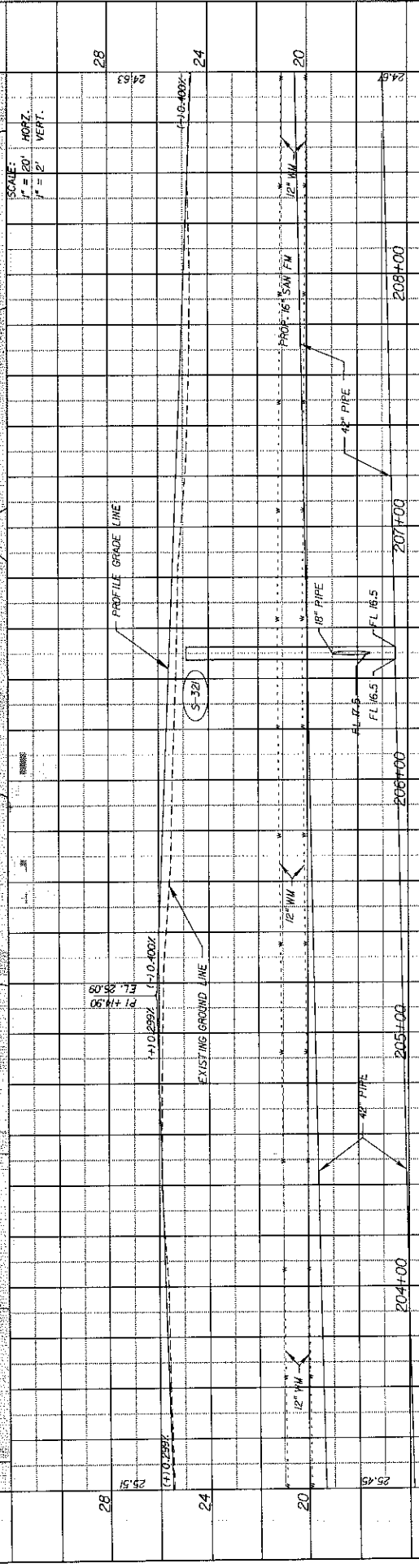
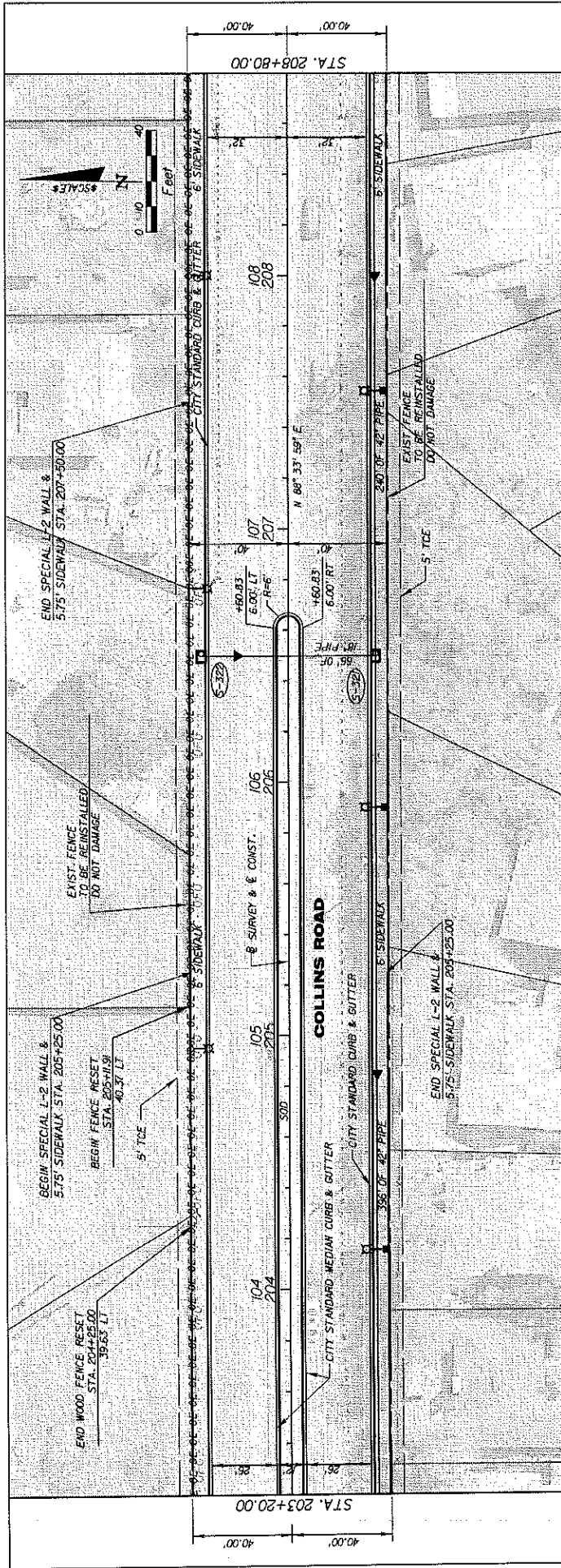
DATE:

DESCRIPTION:

REVISIONS:

DATE:

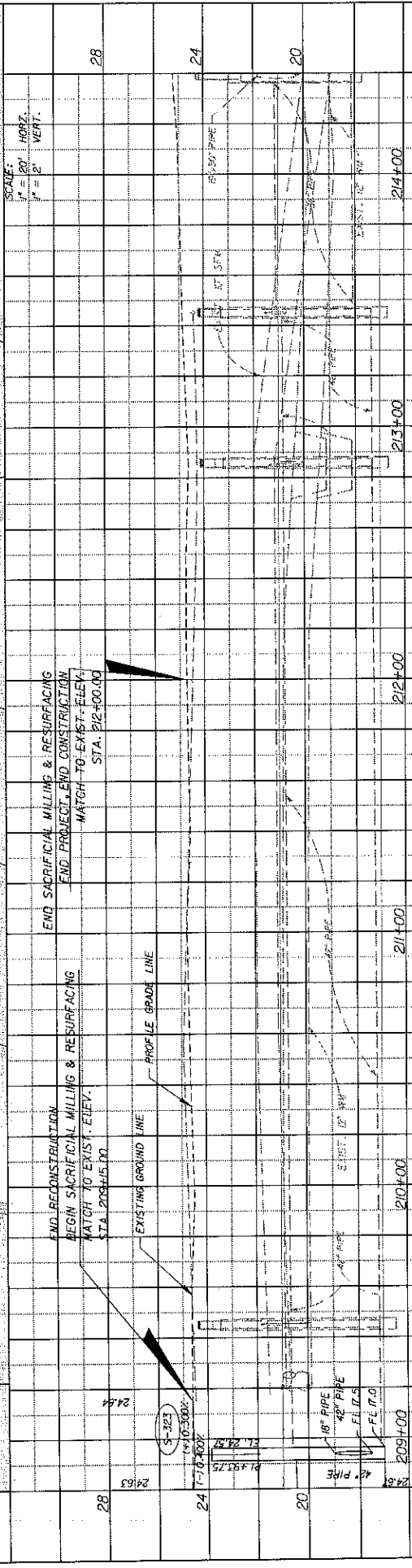
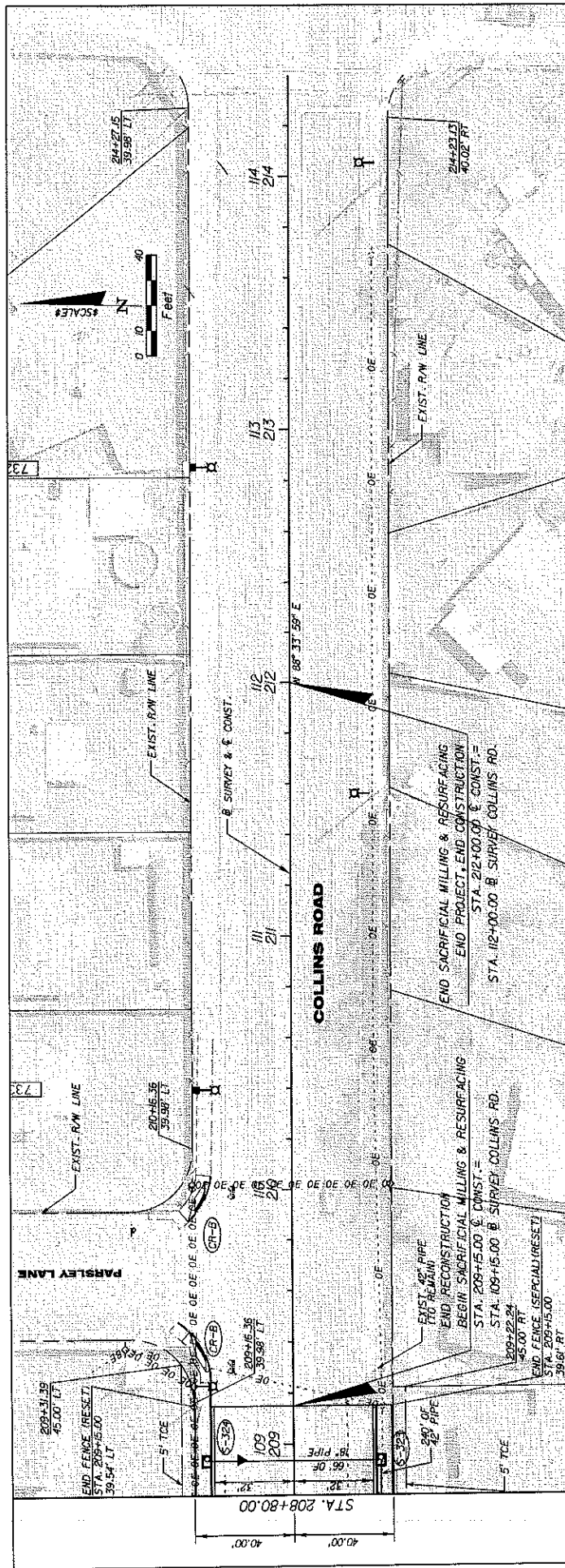
BY:



DATE	BY	DESCRIPTION

REVISORS	DATE	BY	DESCRIPTION

PARSONS BRINCKERHOFF Capital Plaza Two 1000 Chicago, IL 60611 DR. CERT. NO. 0142		WILLIAM M. JENSEN, L.L. F. REG. NO. 0208	
ITM ITAMobilityWorks		PLAN & PROFILE (08) COLLINS ROAD	
SHEET NO. 40		10/1/2008	



DATE	BY	DESCRIPTION	REVISIONS	DATE	BY	DESCRIPTION

PARSONS BRINCKERHOFF
 5000 Park Ave., No. 1000
 Orlando, FL 32803
 © CITE, M. 1982

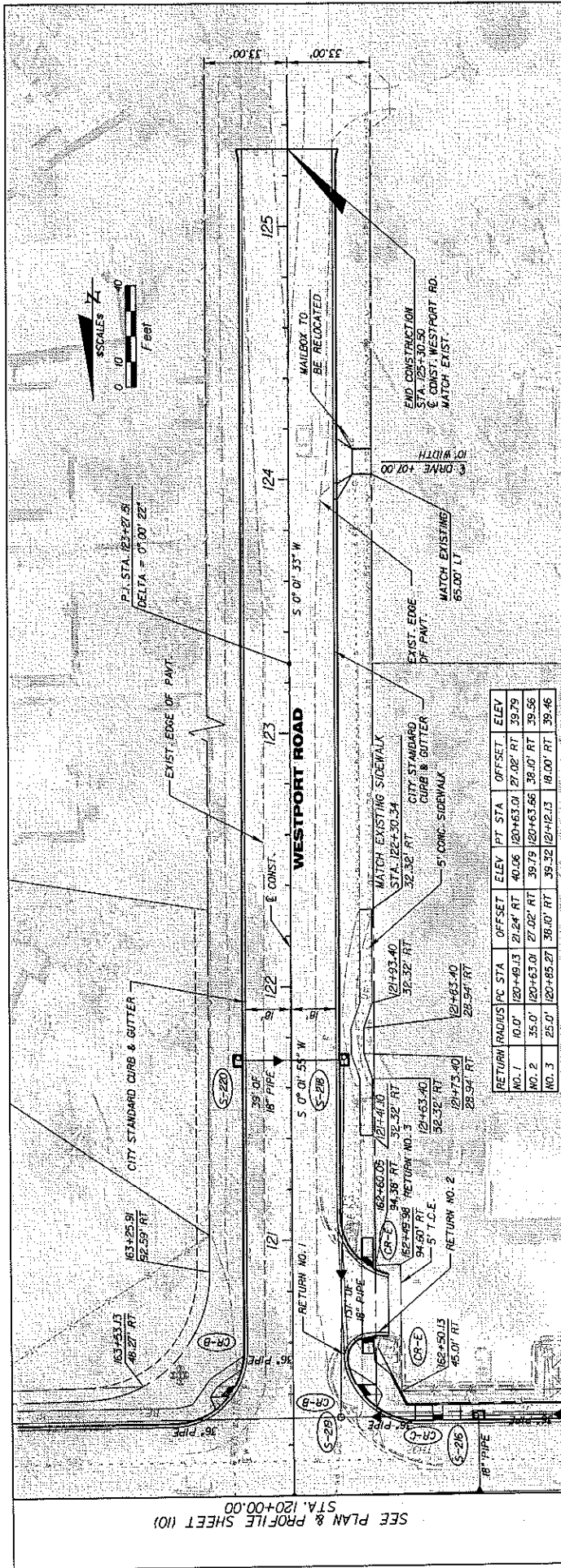


JTM MobilityWorks

**PLAN & PROFILE (19)
 COLLINS ROAD**

SHEET NO. 41

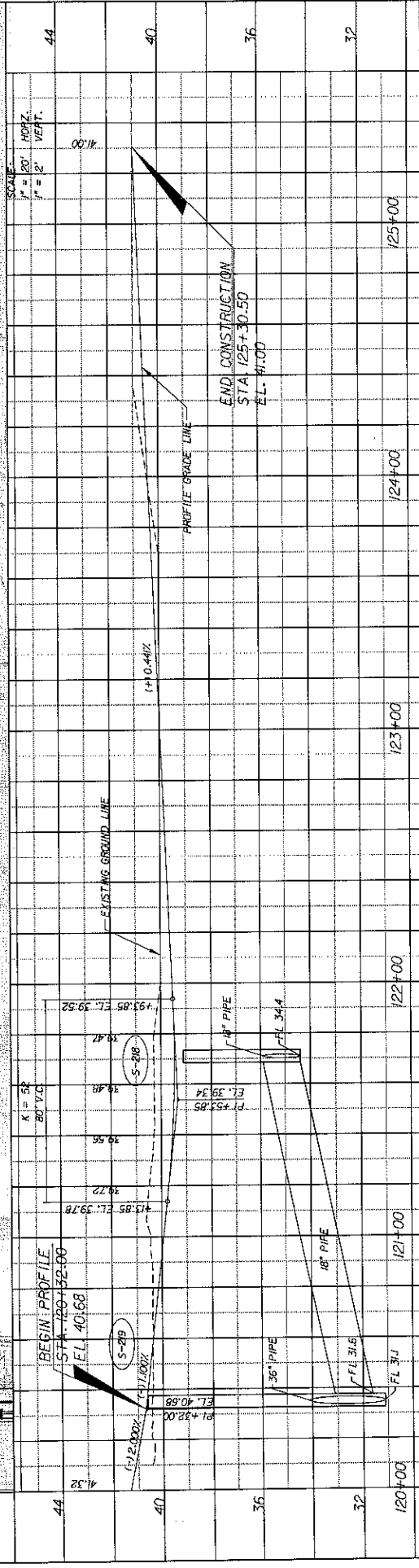
10/1/2006 10:55:44 C:\p\proj\19\collins\collins.dwg



P.I. STA. 123+27.81
DELTA = 0'00' 22"

SEE PLAN & PROFILE SHEET (10)
STA. 120+00.00

RETURN NO.	RADIUS	PC STA	OFFSET	ELEV.	PT. STA.	OFFSET	ELEV.
NO. 1	10.0'	120+49.13	21.24' RT	40.06	120+63.01	27.02' RT	39.79
NO. 2	35.0'	120+63.01	27.02' RT	39.79	120+63.66	38.10' RT	39.56
NO. 3	25.0'	120+85.27	38.10' RT	39.32	121+12.13	18.00' RT	39.46



DATE	BY	DESCRIPTION	DATE	BY	DESCRIPTION

PARSONS BRINCKERHOFF
 Capital Plaza Two
 1000
 CHICAGO, IL 60601
 TEL: 312.467.1000
 FAX: 312.467.1001
 WWW.PBS.COM

ITM MobilityWorks
 1100
 CHICAGO, IL 60601
 TEL: 312.467.1000
 FAX: 312.467.1001
 WWW.ITM.COM

PLAN & PROFILE (20)
WESTPORT ROAD

SHEET NO. 42